



Hybu Cig Cymru  
Meat Promotion Wales

# Little Book of Meat Facts

Compendium of Welsh Red Meat  
and Livestock Industry Statistics 2024



No part of this publication may be reproduced or transmitted in any form by any means without the prior written consent of HCC. Whilst all reasonable care has been taken in preparation, no warranty is given as to its accuracy and to the maximum extent permitted by law no liability accepted for any loss or damage caused by reliance upon any statement or omission from this publication.

**Hybu Cig Cymru – Meat Promotion Wales (HCC)** is the industry led organisation responsible for the development, promotion and marketing of Welsh red meat.

## Development within the Industry

HCC undertakes research and development, dissemination of information and training relevant to each part of the supply chain, to ensure the Welsh red meat industry is in a position to improve quality, increase cost-effectiveness and add value to Welsh red meat products across the whole supply chain.

## Market Development

HCC is active in many important markets worldwide: developing and strengthening business opportunities for Welsh red meat exporters. At home HCC works with retailers, independents and food service operators, undertaking regular promotional programmes for Protected Geographical Indication (PGI) Welsh Lamb and Welsh Beef.

## Communicating

HCC ensures that information regarding developments relating to Welsh red meat are made known to stakeholders and consumers.

For more information on any of the above topics, please visit the website at [meatpromotion.wales](http://meatpromotion.wales) or contact HCC on **01970 625050** or by email at [info@hybucig.cymru](mailto:info@hybucig.cymru)

# Contents

Page

## Section 1 – General Information

Figure 1.1	Most common farm types in Wales, by region, June 2022.....	7
Table 1.1	Human population and land area by Welsh region and UK country, 2022 .....	8
Table 1.2	Agricultural holdings by size (ha) by UK country, 2023 .....	8
Table 1.3	Welsh holdings by farm type, June 2023 .....	9
Figure 1.2	Distribution of farms, cattle and sheep by farm type 2023.....	9
Table 1.4	Value of Welsh agricultural output, 2022 (p).....	10
Table 1.5	Contribution of agriculture to the regional UK economies, 2023 (p) .....	10
Table 1.6	Farm business income by country and type of farm .....	11
Table 1.7	Direct payments to farmers in the UK .....	11
Table 1.8	Principal grants and subsidies in Wales.....	12
Table 1.9	Number and throughputs of all Welsh abattoirs .....	13
Figure 1.3	Changes in abattoir numbers in Wales.....	13
Table 1.10	Abattoirs in Wales slaughtering cattle, sheep and pigs, March 2024.....	14
Figure 1.4	Changes in total UK meat consumption .....	15
Figure 1.5	Changes in red meat purchases by product in GB, 2023 .....	15
Figure 1.6	Comparison of retail market share by meat type in GB .....	16
Figure 1.7	Retailer volume share of total red meat trade in GB, 2023 ...	16

## Section 2 – Cattle

Figure 2.1	Beef cattle density in Wales, June 2022.....	17
Figure 2.2	Dairy cattle density in Wales, June 2022 .....	18
Table 2.1	Welsh cattle numbers in Wales by category .....	19
Table 2.2	Changes in number of holdings in Wales with beef and dairy cows.....	19
Figure 2.3	Changes in cattle numbers in Wales .....	20
Figure 2.4	Calf registrations on holdings in Wales, 2023.....	20
Table 2.3	Throughput of cattle and calves in Welsh abattoirs .....	21
Table 2.4	Total cattle slaughterings by UK country, 2023 .....	21
Table 2.5	Percentage distribution of steer carcasses in GB by conformation and fat class, 2023 .....	22
Table 2.6	Number and throughputs of abattoirs in Wales .....	22
Figure 2.5	Age profile of male and female prime cattle at GB .....	23
Table 2.7	Suckler calf production costs in Wales, 2022/23 .....	24
Table 2.8	Volume and value of UK beef imports.....	24
Table 2.9	Volume and value of UK beef exports.....	25
Table 2.10	UK beef imports.....	25
Table 2.11	UK beef exports .....	26
Table 2.12	UK monthly beef trade, 2023.....	26
Table 2.13	Deadweight cattle prices in England and Wales.....	27
Table 2.14	Deadweight cattle prices in GB .....	28
Figure 2.6	Seasonality of prime cattle deadweight prices, GB .....	29
Figure 2.7	Retailer volume share of beef sales in GB, 2021-2023 .....	29
Table 2.15	Changes in beef purchases, expenditure and average price in Wales and GB, 2023 .....	30
Figure 2.8	Seasonality of beef sales at GB retail by cut, 2023.....	30
Figure 2.9	Retail beef cuts sold in GB by volume, 2023.....	31
Table 2.16	Retail prices for selected beef cuts in Great Britain.....	32
Table 2.17	UK beef and veal balance sheet .....	32

## Section 3 – Sheep

Figure 3.1	Sheep and lamb density in Wales, June 2022.....	33
Table 3.1	Sheep numbers in Wales by category.....	34
Table 3.2	Changes in number of holdings in Wales with sheep.....	34
Figure 3.2	Changes in total sheep and lamb numbers in Wales .....	34
Table 3.3	Throughput of total sheep in Welsh abattoirs.....	35
Table 3.4	Total sheep slaughterings by UK country, 2023.....	35
Table 3.5	Number and throughputs of abattoirs in Wales slaughtering sheep .....	36
Table 3.6	Percentage distribution of lamb carcasses in GB by conformation and fat class, 2023.....	36
Table 3.7	Lamb production costs in Wales, 2022/23 .....	37
Table 3.8	Volume and value of UK sheep meat imports.....	38
Table 3.9	Volume and value of UK sheep meat exports.....	38
Table 3.10	UK sheep meat imports.....	39
Table 3.11	UK sheep meat exports .....	39
Table 3.12	UK monthly sheep meat trade, 2023.....	40
Table 3.13	Deadweight sheep prices in GB .....	41
Figure 3.3	Seasonality of sheep SQQ deadweight prices, GB .....	42
Figure 3.4	Retailer volume shares of lamb sales in GB, 2021-2023.....	43
Table 3.14	Changes in lamb purchases, expenditure and average price in Wales and GB, 2023 .....	43
Figure 3.5	Seasonality of lamb sales at GB retail by cut, 2023 .....	44
Figure 3.6	Retail lamb cuts sold in GB by volume, 2023 .....	44
Table 3.15	Retail prices for selected lamb cuts in Great Britain .....	45
Table 3.16	UK sheep meat balance sheet.....	46

## Section 4 – Pigs

Table 4.1	Pig numbers in Wales by category.....	47
Table 4.2	Changes in number of holdings in Wales with pigs.....	47
Figure 4.1	Changes in breeding pig numbers in Wales.....	47
Table 4.3	Throughput of pigs in Welsh abattoirs.....	48
Table 4.4	Total pig slaughterings by UK country, 2023.....	48
Table 4.5	Number and throughputs of abattoirs in Wales slaughtering pigs.....	49
Table 4.6	Volume and value of UK pig meat imports .....	49
Table 4.7	Volume and value of UK pig meat exports.....	50
Table 4.8	UK pig meat imports.....	50
Table 4.9	UK pig meat exports.....	51
Table 4.10	UK monthly pork trade, 2023.....	51
Table 4.11	Deadweight pig prices in GB .....	52
Figure 4.2	Seasonality of deadweight pig APP EU-Spec prices .....	53
Figure 4.3	Retailer volume share of pork sales in GB, 2021-2023 .....	53
Table 4.12	Changes in pork purchases, expenditure and average price in Wales and GB, 2023.....	54
Figure 4.4	Seasonality of pork sales at GB retail by cut, 2023.....	54
Figure 4.5	Retail pork cuts sold in GB by volume, 2023.....	55
Table 4.13	Retail prices for selected pig meat cuts in Great Britain.....	56
Table 4.14	UK pig meat balance sheet.....	56

# Notes and abbreviations

Where dates are written, for example, as 2022/23, this implies the financial year from April 2022 to March 2023. Volume data is shown in tonnes, carcase weight equivalent, unless otherwise specified.

Kantar data for 2023 is for the 52-week period ending 24 December 2023. The Kantar data was reported at the end of September 2024 and is subject to revision.

Data obtained from both Defra and HMRC (HM Revenue & Customs) for 2023 was reported at the end of September 2024 and is subject to revision.

North East Wales: Denbighshire, Flintshire, Conwy, Wrexham.

North West Wales: Isle of Anglesey, Gwynedd.

**South Wales:** Swansea, Neath Port Talbot, Bridgend, Vale of Glamorgan, Cardiff, Rhondda Cynon Taf, Merthyr Tydfil, Caerphilly, Blaenau Gwent, Torfaen, Monmouthshire, Newport

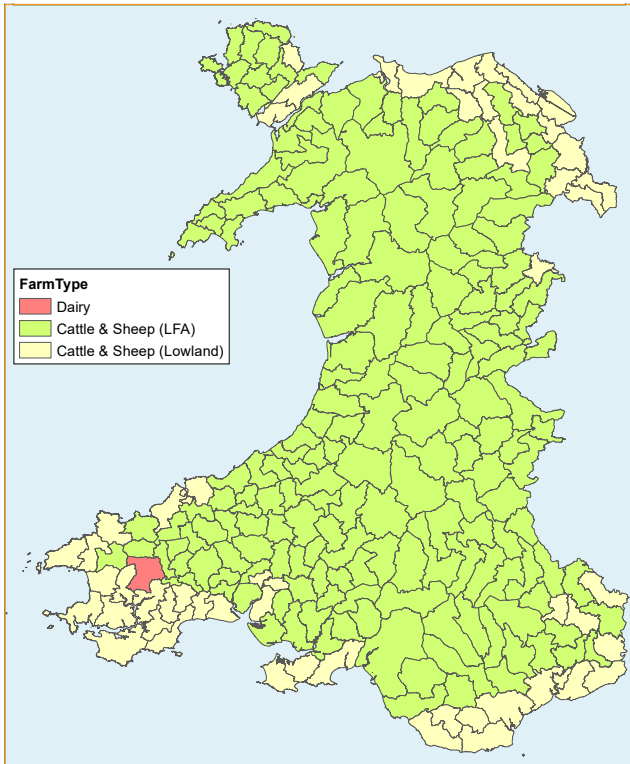
Figures in the tables do not always add up to the totals shown because of rounding.

<b>AHDB</b>	Agriculture and Horticulture Development Board	
<b>APP</b>	All Pig Price	
<b>BCMS</b>	British Cattle Movement Service	
<b>DAPP</b>	Deadweight Average Pig Prices	
<b>DARDNI</b>	Department of Agriculture and Rural Development Northern Ireland	
<b>Defra</b>	Department for Environment, Food and Rural Affairs	
<b>EFS</b>	Expenditure and Food Survey	
<b>EU</b>	European Union	
<b>FSA</b>	Food Standards Agency	
<b>GBU</b>	GB Livestock Units	
<b>GVA</b>	Gross Value Added	
<b>Ha</b>	Hectare	
<b>HCC</b>	Meat Promotion Wales	
<b>IAAS</b>	Institute of Auctioneers and Appraisers in Scotland	
<b>LAA</b>	Livestock Auctioneers Association	
<b>LFA</b>	Less Favoured Area	
<b>RPA</b>	Rural Payments Agency	
<b>SQQ</b>	Standard Quality Quotation	- = none
<b>SPP</b>	Standard Pig Price	na= not available



# Section 1 – General Information

**Figure 1.1** Most common farm types in Wales, by region, June 2022



source: *Agricultural Small Area Statistics, Crown copyright and database rights 2024*  
OS AC0000849488

# Section 1 – General Information

**Table 1.1** Human population and land area by Welsh region and UK country, 2022

	Human population (000 head)	Land area (sq km)
Carmarthenshire	189	2,372
Ceredigion	72	1,790
North East Wales	502	2,910
North West Wales	187	3,262
Pembrokeshire	124	1,619
Powys	134	5,196
South Wales	1,925	3,630
Wales	3,133	20,780
England	57,113	130,281
Scotland	5,448	77,925
Northern Ireland	1,911	13,576
United Kingdom	67,605	242,562

*Note: Data for 2023 was not available at the time of publication.*

*Source: Welsh Government*

**Table 1.2** Agricultural holdings by size (hectares) by UK country, 2023

	Wales	England	Scotland	Northern Ireland
Number of holdings (000)	38	102	43	26
Total area (000 ha)	1,768	8,999	5,331	1,042
Average area (ha)	47	88	123	40
% of total numbers				
<20 ha	55.8	39.0	59.9	43.9
20-49.9 ha	17.6	20.3	11.8	32.3
50-99.9 ha	13.4	16.6	9.6	15.6
>100 ha	13.3	24.0	18.7	8.2
% of total area on holdings with 100 hectares and over:				
	60.3	75.2	88.4	36.5

*Source: Agriculture in the United Kingdom 2023, Defra*

# Section 1 – General Information

**Table 1.3** Welsh holdings by farm type, June 2023

	Holdings (number)	Share of total (%)
Cattle and sheep (LFA)	6,152	16.4
Cattle and sheep (lowland)	1,149	3.1
Dairy	1,346	3.6
Mixed (a)	419	1.1
Cereals	330	0.9
Specialist pigs or poultry	146	0.4
Horticulture	153	0.4
General cropping	96	0.3
Other types (b)	177	0.5
Very small (c)	14,595	38.9
Dormant holdings	12,980	34.6
All types	37,543	

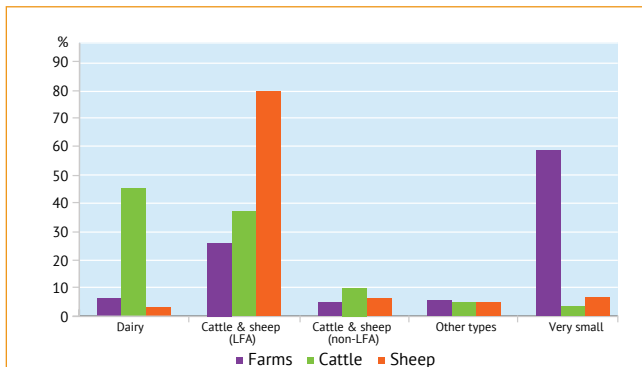
(a) Combination of cropping with various types of livestock

(b) Mainly grass and forage or specialist horses

(c) Holdings with small amounts of agricultural activity are grouped together irrespective of farm type.  
Note: Numbers may not total 100% due to rounding.

Source: Welsh Government

**Figure 1.2** Distribution of farms, cattle and sheep by farm type 2023



Source: Welsh Government

# Section 1 – General Information

**Table 1.4** Value of Welsh agricultural output, 2022 (p)

	Value (£ million)	Share of total value %
Milk & milk products	809	38.5
Finished cattle & calves	390	18.6
Finished sheep & lambs	237	11.3
Poultry & eggs	145	6.9
Store cattle & sheep sales	133	6.3
Finished pigs	8	0.4
Total cereal	60	2.9
Horticulture & potatoes	72	3.4
Other products	24	1.1
Capital formation in livestock (a)	64	3.0
Other agricultural activities	158	7.5
<b>Total Wales</b>	<b>2,100</b>	
<b>United Kingdom</b>	<b>36,022</b>	

(a) Investment in buildings, work physically undertaken by the farmer and the value of the physical increase in breeding livestock (p) Provisional.

Note: Numbers may not total 100% due to rounding.

Source: Welsh Government, *Agriculture in the United Kingdom 2022*, Defra

**Table 1.5** Contribution of agriculture to the regional UK economies, 2023 (p)

	Agricultural gross value added (GVA) at basic prices (£ million)	Total income from farming (£ million)
Wales	709	471
England	9,977	4,541
Scotland	n/a	n/a
Northern Ireland	n/a	341
United Kingdom	13,681	7,232

(p) Provisional

Note: England data based on commercial holdings only, and derived from other UK economic data.

Scottish data has not been updated since 2020

Source: Welsh Government, *DAERA*, Defra

# Section 1 – General Information

**Table 1.6** Farm business income by country and type of farm

(At current prices)	2020/21	2021/22	2022/23
	(£000/farm)		
<b>Wales:</b>			
Dairy	60.0	88.0	165.0
Grazing livestock (LFA)	30.0	38.5	24.5
Grazing livestock (lowland)	23.0	26.5	18.5
<b>England:</b>			
Dairy	92.5	140.0	229.0
Grazing livestock (LFA)	33.5	43.0	25.5
Grazing livestock (lowland)	18.5	34.0	21.5
Specialist pigs	48.0	12.0	68.0
<b>Scotland:</b>			
Dairy	101.5	162.0	248.5
Grazing livestock (LFA)	19.5	23.5	24.5
<b>Northern Ireland:</b>			
Dairy	63.0	83.0	n/a
Grazing livestock (LFA)	20.5	23.0	n/a

Source: Agriculture in the United Kingdom 2023, Defra

**Table 1.7** Direct payments to farmers in the UK

	2021	2022	2023 (p)
	(£ million)		
Basic/Single Payment Scheme	2,825	2,342	2,050
Agri-environment schemes	362	368	666
LFA support schemes	31	117	62
Animal disease compensation	28	68	45
Other (a)	13	25	83

(a) Includes various one off payments, Advisory Services, and New Entrants.

(p) Provisional

Source: Agriculture in the United Kingdom 2023, Defra.

# Section 1 – General Information

**Table 1.8** Principal grants and subsidies in Wales

	2021	2022	2023
	(£ million)		
Basic Payment Scheme	234.1	237.3	234.1
Glastir Advanced	17.2	16.5	31.3
Glastir Entry	9.2	8.9	17.3
Glastir Commons	5.3	5.2	10.3
Glastir Woodland	2.4	4	6.1
Glastir Organic	3.4	3.2	5.9
Glastir Small Grants	1.9	1.1	0.02

(a) Glastir has replaced Tir Mynydd, Tir Gofal, Tir Cynnal and the Organic Farming Scheme / Organic Farming Conversion Scheme. In 2015 the Basic Payment Scheme (BPS) replaced Single Payment Scheme (SPS).

Note: Payments are made on a continuous basis and as such are always subject to revision. RPW made two rounds of Glastir payments in 2023, bringing forward the final Glastir payments

Source: Welsh Government

**Table 1.9** Number and throughputs of all Welsh abattoirs

GB Livestock Units*	Abattoirs (number)		Throughputs (%)	
	2022	2023	2022	2023
0-1,000	2	3	0.2	0.3
1,001-10,000	9	8	6.0	5.6
10,001-30,000	1	1	1.9	2.1
30,001-100,000	2	2	16.0	17.6
100,001 and over	3	3	75.9	74.5
<b>Total</b>	<b>17</b>	<b>17</b>		

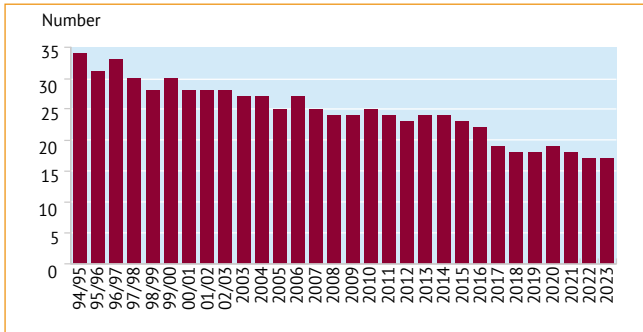
\* GB Livestock Unit = 1 cattle beast = 5 sheep = 2 pigs

Note: Numbers may not total 100%, due to rounding.

Source: HCC

# Section 1 – General Information

**Figure 1.3** Changes in Welsh abattoir numbers\*



\* Figures for 2004-2023 are for calendar years; previous figures relate to year ended March.

Source: HCC

# Section 1 – General Information

**Table 1.10** Abattoirs in Wales slaughtering cattle, sheep and pigs, March 2024

Trading Name	Location	Species Slaughtering		
		Cattle	Sheep	Pigs
Cig Calon Cymru Cyf	Cross Hands	Cattle	Sheep	
Cig Eryri Snowdonia Meats Cyf	Blaenau Ffestiniog	Cattle	Sheep	
Cig Oen Caron	Tregaron	Cattle	Sheep	Pigs
Conwy Valley Meats Ltd	Llanrwst	Cattle	Sheep	
D & J Thomas	Wrexham	Cattle	Sheep	Pigs
D T Havard, Caerphilly abattoir	Caerphilly		Sheep	
Dunbia (Wales)	Llanybydder	Cattle	Sheep	
Euro Farm Wales	Haverfordwest	Cattle		
Farmers Fresh (Wales) Ltd	Wrexham		Sheep	
G R Evans & Co	Corwen	Cattle	Sheep	Pigs
M K (Wales) Ltd	Maesteg	Cattle	Sheep	Pigs
N S James	Raglan		Sheep	Pigs
Pilgrim's UK Lamb Ltd	Llanidloes		Sheep	
St Merryn Meats (Kepak Group Ltd)	Merthyr Tydfil	Cattle	Sheep	
W J George Butchers Ltd	Brecon	Cattle	Sheep	Pigs

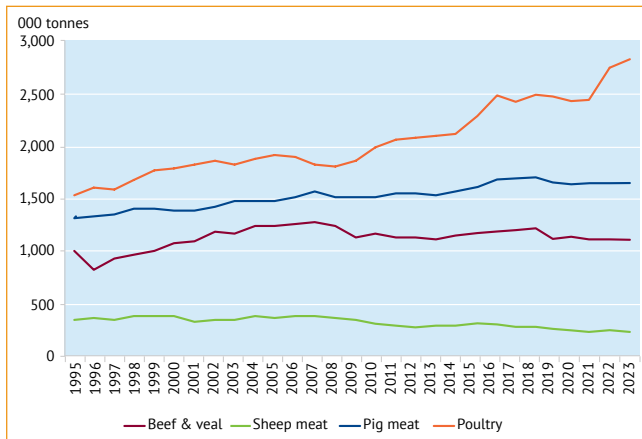
Plants listed in alphabetical order.

Source: HCC



# Section 1 – General Information

**Figure 1.4** Changes in total UK meat consumption

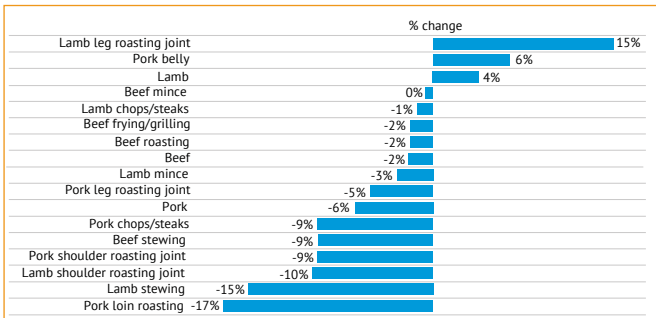


Source: AHDB, Defra, UK HMRC compiled by Trade Data Monitor LLC

Please note this information may be subject to revision

\* Total supplies of meat available for consumption. All weights are carcase weight equivalent.

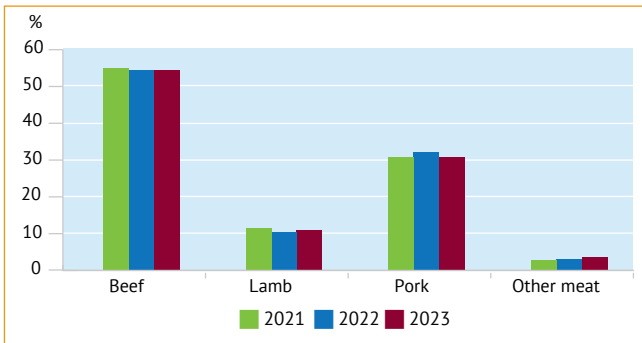
**Figure 1.5** Changes in red meat purchases by product in GB, 2023



Source: Kantar

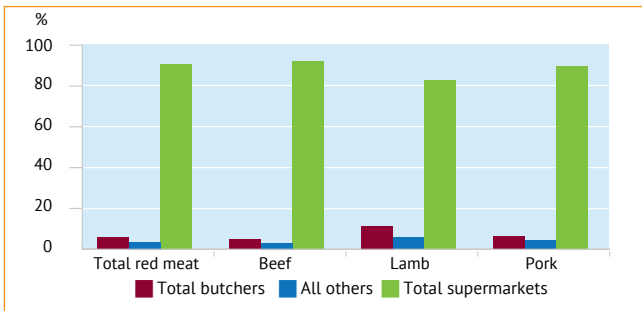
# Section 1 – General Information

**Figure 1.6** Comparison of retail market share by red meat type in GB



Source: Kantar

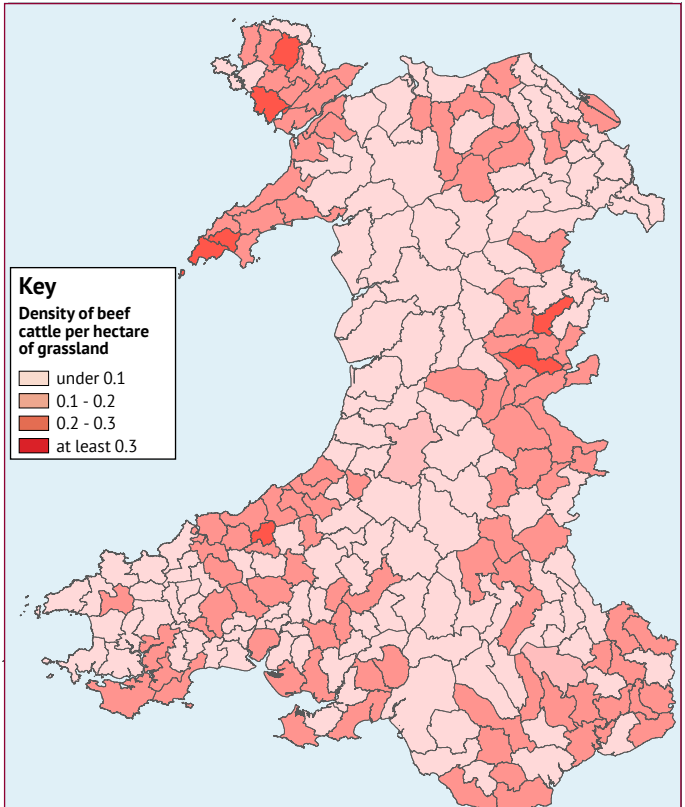
**Figure 1.7** Retailer volume share of total red meat trade in GB, 2023



Source: Kantar

## Section 2 – Cattle

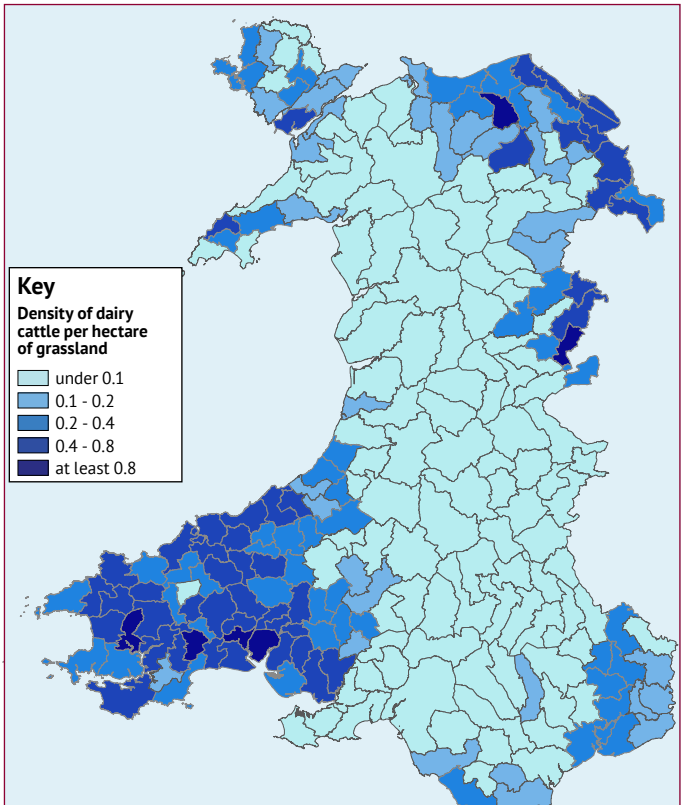
**Figure 2.1** Beef cattle density in Wales, June 2022



source: Agricultural Small Area Statistics, Crown copyright and database rights 2024 OS AC0000849488

## Section 2 – Cattle

Figure 2.2 Dairy cattle density in Wales, June 2022



source: Agricultural Small Area Statistics, Crown copyright and database rights 2024 OS AC0000849488

## Section 2 – Cattle

**Table 2.1** Welsh cattle numbers by category

(000 head)	June 2021	June 2022	June 2023
<b>Cattle aged 2 years or more</b>	523	518	513
– Female dairy breeds	291	289	290
– Female non-dairy breeds	199	196	188
– Males	33	33	35
<b>Cattle aged 1-2 years</b>	262	273	272
– Female dairy breeds	74	81	82
– Female non-dairy breeds	93	94	92
– Males	95	99	98
<b>Cattle under 1 year</b>	344	341	333
– Female dairy breeds	83	87	82
– Female non-dairy breeds	118	116	117
– Males	142	138	134
<b>Total cattle and calves</b>	<b>1,129</b>	<b>1,132</b>	<b>1,117</b>

Source: Cattle Tracing System

**Table 2.2** Changes in number of holdings in Wales with beef and dairy cows

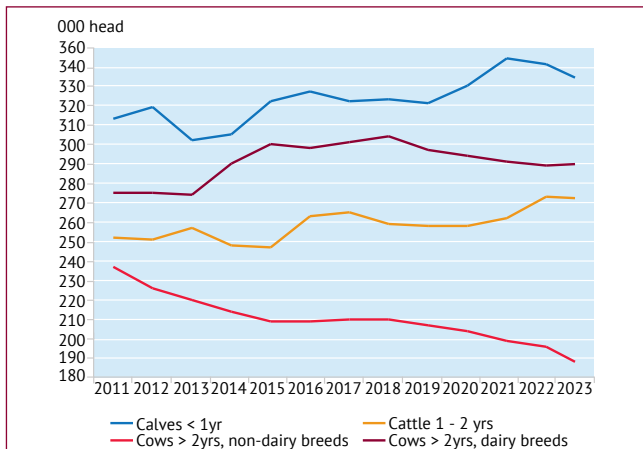
	June 2013	June 2023
Dairy females (a)	223,208	254,709
Number of dairy cow holdings	2,893	2,219
Average dairy herd size (head)	77	115
Beef females (a)	174,100	149,290
Number of beef cow holdings	8,014	6,595
Average beef size herd (head)	22	23
Total number of cattle and calf holdings	11,104	9,680

(a) Females aged 2 years or more that have calved

Source: Cattle Tracing System

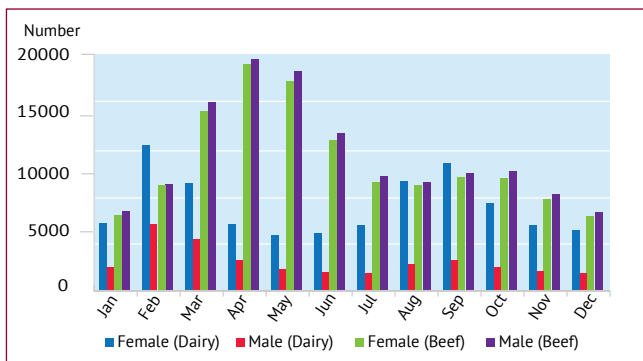
## Section 2 – Cattle

**Figure 2.3** Changes in cattle numbers in Wales



Source: Cattle Tracing System

**Figure 2.4** Calf registrations on holdings in Wales, 2023



Source: Cattle Tracing System

## Section 2 – Cattle

**Table 2.3** Throughput of cattle and calves in Welsh abattoirs

	Slaughterings (000 head)	Production (000 tonnes)
2021	118.1	37.3
2022	121.9	38.3
2023	172.8	51.3
<b>2023 by month:</b>		
January	13.7	4.4
February	13.0	3.9
March	14.6	4.5
April	13.3	4.3
May	14.7	4.3
June	13.4	3.9
July	12.9	3.8
August	14.7	4.3
September	14.2	4.0
October	17.2	4.9
November	18.0	5.2
December	13.0	3.7

Source: Defra

**Table 2.4** Total cattle slaughterings by UK country, 2023

Wales	England	Scotland	Great Britain	Northern Ireland
(000 head)				
173	1,685	413	2,271	495

Source: Defra

## Section 2 – Cattle

**Table 2.5** Percentage distribution of steer carcasses in GB by conformation and fat class, 2023

		Fat class Increasing fatness →							
		1	2	3	4L	4H	5L	5H	Overall
Conformation class ↑ Improving conformation	E	0.0	0.2	0.2	0.0	0.0	0.0	0.0	0.4
	U+	0.1	1.1	2.0	0.5	0.1	0.0	0.0	3.7
	-U	0.1	1.6	6.0	4.3	0.6	0.0	0.0	12.7
	R	0.3	5.1	21.4	15.5	3.3	0.2	0.0	45.8
	O+	0.3	2.9	13.0	8.4	1.3	0.1	0.0	26.0
	-O	0.2	1.5	5.7	1.8	0.2	0.0	0.0	9.4
	P+	0.1	0.6	0.8	0.1	0.0	0.0	0.0	1.6
	-P	0.1	0.1	0.1	0.0	0.0	0.0	0.0	0.3
	Overall	1.3	13.0	49.2	30.7	5.5	0.3	0.0	

Source: AHDB

**Table 2.6** Number and throughputs of abattoirs in Wales slaughtering cattle\*

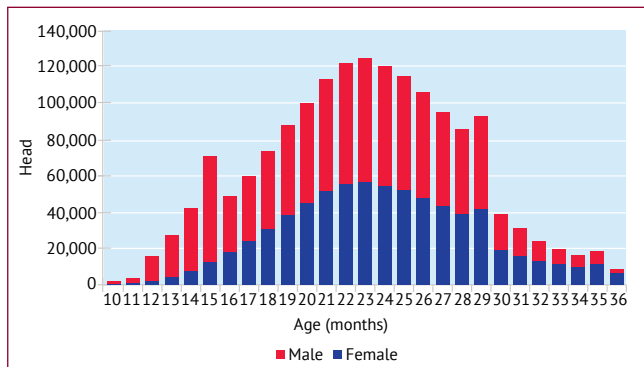
Annual throughput:	Abattoirs (number)		Throughputs (000 head)	
	2022	2023	2022	2023
0-1,000	9	9	4.5	4.1
1,001-5,000	1	1	2.0	2.0
5,001 and over	4	4	140.4	152.7
<b>Total</b>	<b>14</b>	<b>14</b>	<b>146.9</b>	<b>158.7</b>

\* Figures from Welsh Red Meat Levy returns

Source: HCC



**Figure 2.5** Age profile of male and female prime cattle at GB abattoirs, 2023



Source: Cattle Tracing System

## Section 2 – Cattle

**Table 2.7** Suckler calf production costs in Wales, 2022/23

	All farms (average)	Bottom third (high cost)	Top third (low cost)
	(pence per kg liveweight)		
Feed & forage	62	88	44
Veterinary & medicines	12	13	11
Other	22	27	16
<b>Total variable costs</b>	<b>97</b>	<b>128</b>	<b>71</b>
<b>Herd replacement</b>	<b>-9</b>	<b>0</b>	<b>-21</b>
Labour	7	8	3
Power & machinery	66	80	46
Finance & general farm costs	63	94	38
Rent	7	9	2
<b>Total fixed costs</b>	<b>142</b>	<b>191</b>	<b>89</b>
<b>Total costs</b>	<b>230</b>	<b>319</b>	<b>139</b>

\* Data released to financial year ended March 2023. Based on 29 suckler herds.

Top third and bottom third rankings are determined by net margin.

Total costs comprise variable, fixed and herd replacement costs.

Source: Farm Business Survey in Wales

**Table 2.8** Volume and value of UK beef imports

	Fresh/frozen beef and veal		Offal	
	(000 tonnes)	(£ million)	(000 tonnes)	(£ million)
<b>2016</b>	263.6	1,016.1	13.2	19
<b>2017</b>	274.7	1,073.9	9.1	15.7
<b>2018</b>	290.0	1,168.4	18.9	21.7
<b>2019</b>	251.0	991.7	20.2	17.9
<b>2020</b>	232.9	924.0	15.7	16.6
<b>2021</b>	241.9	1,067.0	13.1	22.6
<b>2022</b>	233.3	1,241.2	18.0	37.2
<b>2023</b>	223.4	1,244.2	17.5	35.8

Note: Volumes are shipped product weight.

Source: HM Revenue & Customs (HMRC)

## Section 2 – Cattle

**Table 2.9** Volume and value of UK beef exports

	Fresh/frozen beef and veal		Offal	
	(000 tonnes)	(£ million)	(000 tonnes)	(£ million)
2016	110.4	369.3	42.2	52.8
2017	105.6	405.1	40.1	56.5
2018	110.5	435.1	38.4	59.3
2019	135.8	464.2	48.7	70.8
2020	116.2	381.9	49.5	68.8
2021	102.9	364.0	26.6	47.2
2022	123.7	540.5	26.6	59.0
2023	103.7	489.5	25.0	61.0

Note: Volumes are shipped product weight.

Source: HM Revenue & Customs (HMRC)

**Table 2.10** UK beef imports

		2021	2022	2023
		(000 tonnes, product weight)		
Total beef and veal		241.9	233.3	223.4
Of which from:	Irish Republic	189.5	168.5	163.4
	Poland	15.0	16.8	18.9
	Netherlands	13.3	11.5	9.5
	Germany	6.2	14.6	7.6
	Brazil	2.9	4.4	4.9
	Spain	2.7	2.4	2.7
	Uruguay	2.7	3.0	2.5
	Australia	0.9	0.9	2.0

Source: HM Revenue & Customs (HMRC)

## Section 2 – Cattle

**Table 2.11** UK beef exports

		2021	2022	2023
		(000 tonnes, product weight)		
Total beef and veal		102.9	123.7	103.7
Of which to:	Irish Republic	32.7	36.5	35.1
	France	16.8	30.4	24.2
	Netherlands	13.0	21.9	17.4
	Hong Kong	8.5	4.3	4.6
	Germany	1.4	3.4	3.3
	Italy	2.1	3.1	2.9
	Belgium	2.7	2.7	2.3
	Sweden	1.9	1.8	1.7

Source: HM Revenue & Customs (HMRC)

**Table 2.12** UK monthly beef trade, 2023

	UK beef imports	UK beef exports
	(000 tonnes, product weight)	
January	17.8	8.5
February	16.2	8.8
March	19.3	9.0
April	16.8	7.8
May	20.4	7.9
June	19.6	8.4
July	18.4	8.0
August	18.1	8.1
September	18.4	8.3
October	19.7	9.7
November	20.2	11.2
December	18.6	8.1

Source: HM Revenue & Customs (HMRC)

## Section 2 – Cattle

**Table 2.13** Deadweight cattle prices in England and Wales\*

	R4L steers	R4L young bulls	R4L heifers	-04L cows
	(pence per kilogram deadweight)			
2021	404.7	394.1	404.1	288.9
2022	439.8	433.1	439.3	353.3
2023	485.3	471.1	484.1	372.6
<b>2023 by month:</b>				
January	464.3	445.9	463.0	377.5
February	485.9	465.2	483.8	395.1
March	493.2	476.7	493.0	405.2
April	496.5	486.1	496.7	407.1
May	498.5	489.5	498.0	410.9
June	490.8	481.3	489.2	404.0
July	476.0	461.2	474.4	371.4
August	466.4	449.6	465.5	341.1
September	481.9	469.8	481.0	354.8
October	488.0	469.4	486.8	337.4
November	488.3	470.6	486.4	320.6
December	494.2	475.8	491.7	323.1

\* Prices collected from a sample of abattoirs slaughtering more than 20,000 cattle annually.

Source: AHDB

## Section 2 – Cattle

**Table 2.14** Deadweight cattle prices in GB

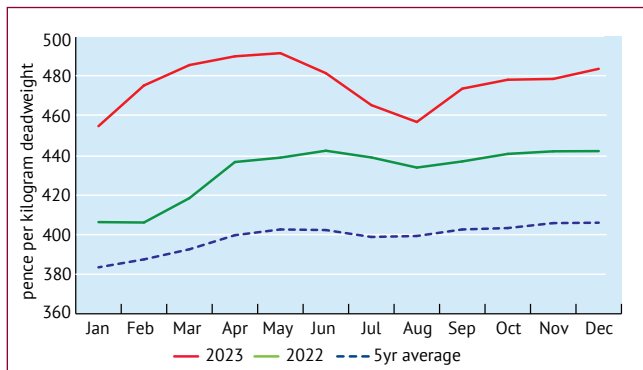
	R4L steers	R4L young bulls	R4L heifers	-04L cows
	(pence per kilogram liveweight)			
2021	407.8	399.3	407.5	289.1
2022	441.1	434.4	441.5	353.3
2023	488.2	473.9	487.0	373.0
<b>2023 by month:</b>				
January	465.3	447.1	464.3	377.6
February	485.8	466.0	484.8	395.2
March	494.8	478.4	494.6	405.4
April	499.9	490.7	500.1	407.3
May	503.2	494.9	502.2	411.0
June	494.1	483.3	492.6	404.1
July	478.1	462.6	477.1	371.5
August	470.2	456.4	468.8	341.2
September	488.3	473.0	486.6	355.7
October	493.2	476.3	491.5	339.0
November	493.7	473.4	491.6	321.2
December	497.4	479.1	494.8	323.7

Price collected from abattoirs slaughtering more than 20,000 adult cattle annually.

Source: AHDB

## Section 2 – Cattle

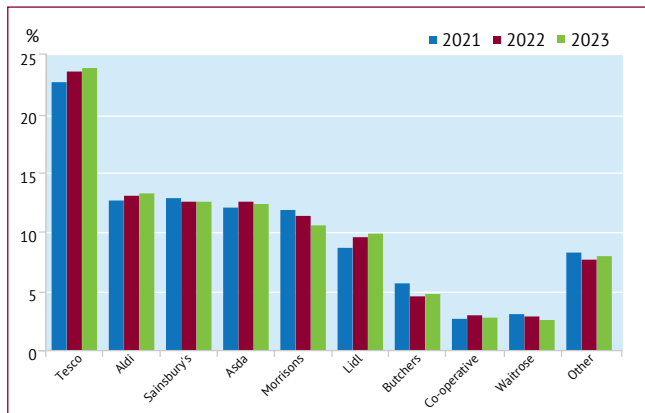
**Figure 2.6** Seasonality of prime cattle deadweight prices, GB



Price collected from abattoirs slaughtering more than 20,000 adult cattle annually.

Source: AHDB

**Figure 2.7** Retailer volume share of beef sales in GB 2021-2023



Source: Kantar

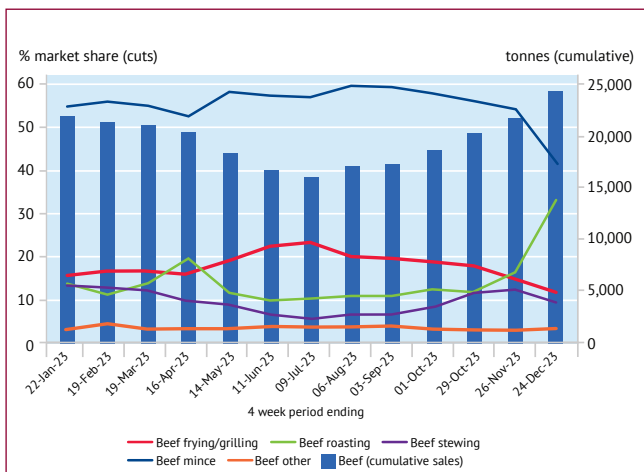
## Section 2 – Cattle

**Table 2.15** Changes in beef purchases, expenditure and average price in Wales and GB, 2023

	Beef purchases (tonnes)	Beef purchases (% change)	Beef expenditure (£ million)	Beef expenditure (% change)	Beef average price (£/kg)	Beef average price (% change)
Wales	12,764	-3.5	122.4	3.9	9.6	7.6
GB	255,460	-2.0	2,413.1	7.4	9.5	9.7

Source: Kantar

**Figure 2.8** Seasonality of beef sales at GB retail by cut, 2023

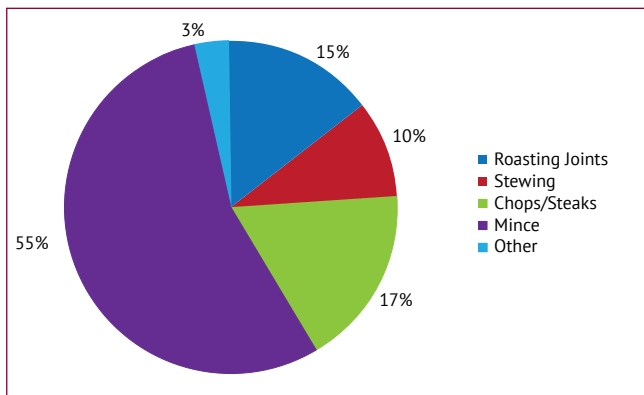


Source: Kantar



## Section 2 – Cattle

**Figure 2.9** Retail beef cuts sold in GB by volume, 2023



Source: Kantar

## Section 2 – Cattle

**Table 2.16** Retail prices for selected beef cuts in Great Britain\*

	Roasting Joint	Sirloin Steak	Fillet Steak	Standard Mince
	(pence per kilogram)			
<b>2023 by month:</b>				
January	1,012.7	2,021.1	3,340.0	364.0
February	1,117.9	1,933.0	3,339.7	399.6
March	1,053.9	1,933.7	3,339.7	445.9
April	1,150.5	2,012.4	3,364.2	498.1
May	1,158.4	2,030.1	3,379.2	498.1
June	1,158.4	2,030.1	3,379.2	498.1
July	1,128.3	2,030.1	3,379.2	498.1
August	1,109.4	2,030.1	3,379.2	505.5
September	1,158.5	2,030.1	3,388.5	505.5
October	1,142.4	2,023.3	3,388.5	507.8
November	1,142.4	2,027.1	3,388.5	500.3
December	1,015.6	2,027.1	3,335.5	500.3

\* Prices obtained from a weekly survey of a number of supermarkets' websites each week, with the prices quoted above for the last week of each month (or the latest week available).

Source: AHDB

**Table 2.17** UK beef and veal balance sheet\*

	2021	2022	2023
	(000 tonnes)		
Production	906.2	923.4	904.3
Imports	357.3	359.9	345.9
Exports	133.4	157.9	131.8
Total consumption	1,130.1	1,125.4	1,118.5
Self sufficiency (%) **	80.2	82.0	80.9

\* Total supplies of meat available for consumption. All weights are carcase weight equivalent.

\*\*Further publication of the trade flow information is prohibited unless expressly permitted by Trade Data Monitor LLC

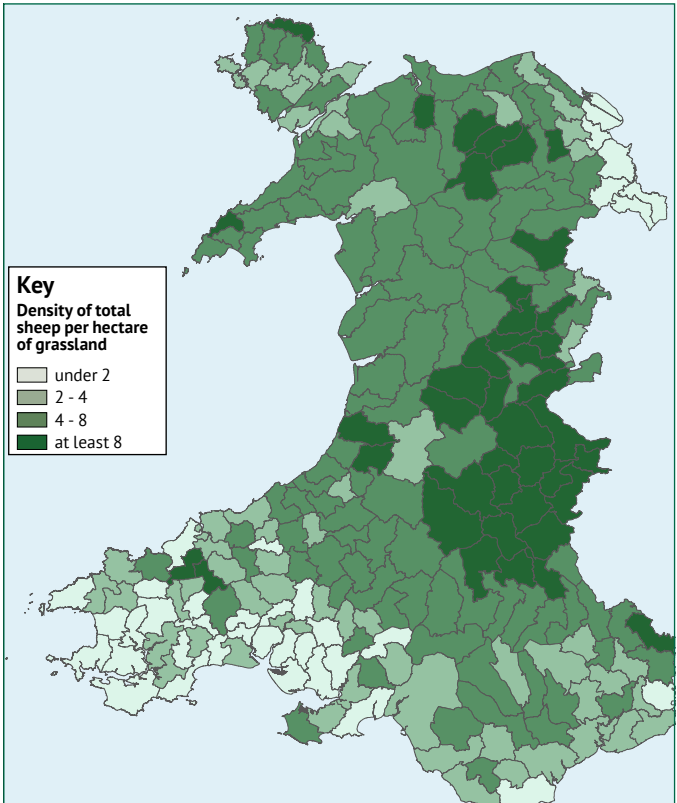
\*\*\*Self-sufficiency is based upon production as a percentage of consumption

Source: AHDB, Defra, UK HMRC compiled by Trade Data Monitor LLC

Please note this information may be subject to revision

## Section 3 – Sheep

**Figure 3.1** Sheep and lamb density in Wales, June 2022



source: Agricultural Small Area Statistics, Crown copyright and database rights 2024 OS AC0000849488

# Section 3 – Sheep

**Table 3.1** Sheep numbers in Wales by category

(000 head)	June 2021	June 2022	June 2023
Total sheep, over one year	4,817	4,780	4,586
Lambs under one year	4,648	4,573	4,109
Total sheep and lambs	9,464	9,352	8,695

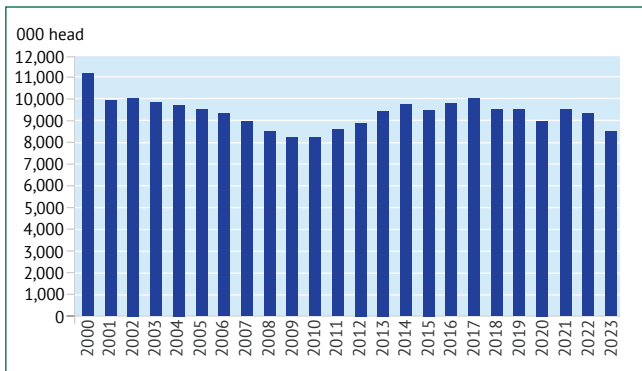
Source: Welsh Government

**Table 3.2** Changes in number of holdings in Wales with sheep

	June 2013	June 2023
Number of sheep and lamb holdings	14,741	13,875
Average flock size (head)	642	627

Source: Welsh Government

**Figure 3.2** Changes in total sheep and lamb numbers in Wales



Source: Welsh Government

## Section 3 – Sheep

**Table 3.3** Throughput of total sheep in Welsh abattoirs

	Slaughterings (000 head)	Production (000 tonnes)
2021	2,456.7	47.7
2022	2,470.1	47.4
2023	2,416.0	46.1
<b>2023 by month:</b>		
January	193.3	3.7
February	191.7	3.7
March	226.9	4.5
April	162.7	3.2
May	163.3	3.2
June	193.6	3.6
July	180.0	3.4
August	207.7	3.9
September	213.0	4.0
October	229.4	4.3
November	234.0	4.4
December	220.3	4.0

Source: Defra

**Table 3.4** Total sheep slaughterings by UK country, 2023

Wales	England	Scotland	Great Britain	Northern Ireland
(000 head)				
2,416	10,001	997	13,414	515

Source: Defra

## Section 3 – Sheep

**Table 3.5** Number and throughputs of abattoirs in Wales slaughtering sheep\*

Annual throughput:	Abattoirs (number)		Throughputs (000 head)	
	2022	2023	2022	2023
0-5,000	4	4	10.3	10.1
5,001-20,000	7	6	77.7	67.5
20,001-50,000	1	2	26.6	57.1
50,001 and over	4	4	2,332.8	2,274.9
<b>Total</b>	<b>16</b>	<b>16</b>	<b>2,447.4</b>	<b>2,409.6</b>

\* Figures from Welsh Red Meat Levy returns

Source: HCC

**Table 3.6** Percentage distribution of lamb carcasses in GB by conformation and fat class, 2023

		Fat class Increasing fatness →							
		1	2	3L	3H	4L	4H	5	Overall
Conformation class Improving conformation ↑	E	0.0	0.4	1.9	0.6	0.1	0.0	0.0	3.0
	U	0.1	2.3	11.4	5.4	1.2	0.1	0.0	20.5
	R	0.5	12.3	29.7	12.3	2.2	0.1	0.0	57.1
	O	0.9	8.1	7.6	1.8	0.2	0.0	0.0	18.7
	P	0.4	0.4	0.0	0.0	0.0	0.0	0.0	0.8
	Overall	1.9	23.5	50.6	20.1	3.7	0.3	0.0	

Source: AHDB

## Section 3 – Sheep

**Table 3.7** Lamb production costs in Wales, 2022/23\*

	All farms (average)	Bottom third (high cost)	Top third (low cost)
	(pence per kg liveweight)		
Feed & forage	93	113	73
Veterinary & medicines	14	17	12
Other	23	25	20
<b>Total variable costs</b>	<b>131</b>	<b>155</b>	<b>105</b>
<b>Flock replacement</b>	<b>19</b>	<b>26</b>	<b>16</b>
Paid Labour	6	9	4
Power & machinery	62	91	45
Finance & general farm costs	50	68	33
Rent	10	15	7
<b>Total fixed costs</b>	<b>128</b>	<b>183</b>	<b>89</b>
<b>Total costs</b>	<b>278</b>	<b>364</b>	<b>210</b>

\* Data relates to financial year ended March 2023. Based on 120 farms.

Top third and bottom third rankings are determined by net margin.

Total costs comprise variable, fixed and flock replacement costs.

Source: Farm Business Survey in Wales

## Section 3 – Sheep

**Table 3.8** Volume and value of UK sheep meat imports

	Fresh/frozen sheep meat		Offal	
	(000 tonnes)	(£ million)	(000 tonnes)	(£ million)
<b>2016</b>	89.6	345.1	8.5	16.0
<b>2017</b>	80.0	369.3	7.6	11.0
<b>2018</b>	77.6	373.3	8.8	14.2
<b>2019</b>	62.7	311.6	8.3	15.8
<b>2020</b>	57.1	308.9	5.9	13.7
<b>2021</b>	46.5	260.8	5.9	14.3
<b>2022</b>	54.3	342.0	7.4	20.9
<b>2023</b>	48.4	243.6	5.7	17.6

Note: Volumes are shipped product weight.

Source: HM Revenue & Customs (HMRC)

**Table 3.9** Volume and value of UK sheep meat exports

	Fresh/frozen sheep meat		Offal	
	(000 tonnes)	(£ million)	(000 tonnes)	(£ million)
<b>2016</b>	78.1	327.1	6.5	9.1
<b>2017</b>	89.8	385.1	5.7	9.4
<b>2018</b>	83.2	367.6	5.2	8.9
<b>2019</b>	95.1	399.4	5.8	8.7
<b>2020</b>	87.5	436.4	5.4	8.9
<b>2021</b>	69.9	438.1	2.9	5.6
<b>2022</b>	75.3	494.2	3.2	6.5
<b>2023</b>	84.5	546.5	5.1	11.2

Note: Volumes are shipped product weight.

Source: HM Revenue & Customs (HMRC)



## Section 3 – Sheep

**Table 3.10** UK sheep meat imports

		2021	2022	2023
		(000 tonnes, product weight)		
Total sheep meat		46.5	54.3	48.4
Of which from:	New Zealand	31.1	32.5	26.4
	Australia	9.1	9.6	11.4
	Irish Republic	2.4	9.4	8.1
	Spain	0.6	0.8	1.0
	Falkland Islands	0.2	0.5	0.5

Source: HM Revenue & Customs (HMRC)

**Table 3.11** UK sheep meat exports

		2021	2022	2023
		(000 tonnes, product weight)		
Total sheep meat		70.0	75.3	84.5
Of which to:	France	36.4	35.5	42.9
	Germany	12.8	14.1	15.9
	Belgium	6.2	7.3	7.1
	Irish Republic	4.0	8.0	4.6
	Netherlands	2.3	1.7	3.6
	Italy	1.9	2.6	3.5

Source: HM Revenue & Customs (HMRC)

## Section 3 – Sheep

**Table 3.12** UK monthly sheep meat trade, 2023

	UK sheep meat imports	UK sheep meat exports
	(000 tonnes, product weight)	
January	2.4	6.0
February	3.6	6.3
March	4.8	8.9
April	3.7	7.2
May	4.6	5.5
June	4.4	6.9
July	5.2	5.3
August	4.3	6.4
September	4.5	6.9
October	3.4	7.5
November	4.2	8.0
December	3.2	9.7

Source: HM Revenue & Customs (HMRC)

## Section 3 – Sheep

**Table 3.13** Deadweight sheep prices in GB\*

	Standard Quality Quotation (SQQ)	
	R3L	All grades
	(pence per kilogram deadweight)	
2021	575.4	576.9
2022	570.7	567.3
2023	578.9	578.1
<b>2023 by month:</b>		
January	519.8	514.6
February	510.4	505.9
March	545.0	541.5
April	655.3	650.1
May	707.7	705.6
June	649.4	650.6
July	599.7	598.7
August	570.0	569.5
September	551.0	549.8
October	565.0	564.0
November	588.8	586.3
December	589.6	587.1

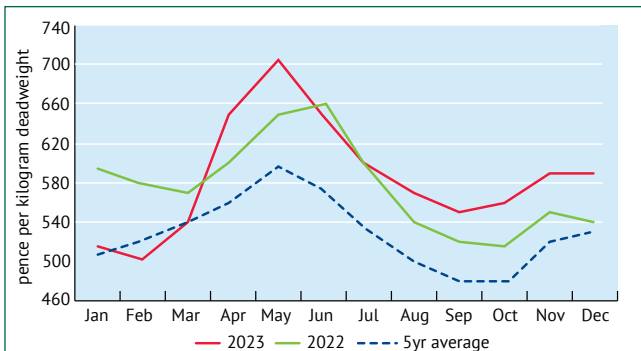
Prices collected from a sample of GB abattoirs. Standard Quality Quotation (SQQ) includes animals weighing 12-21.5kg dw. Old season prices are recorded until the third Monday in May, and new season prices for the remainder of the year.

\*With effect from week ending 25 November 2023, AHDB introduced a change to deadweight sheep price reporting to help standardise dressing specifications across the survey.

Source: AHDB

## Section 3 – Sheep

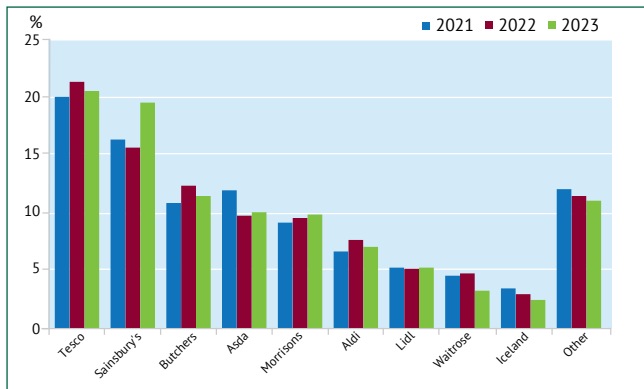
**Figure 3.3** Seasonality of sheep SQQ deadweight prices, GB



Standard Quality Quotation (SQQ) includes animals weighing 12-21.5kg dw. Old season prices are recorded until the third Monday in May, and new season prices for the remainder of the year. \*With effect from week ending 25 November 2023, AHDB introduced a change to deadweight sheep price reporting to help standardise dressing specifications across the survey.  
Source: AHDB

## Section 3 – Sheep

**Figure 3.4** Retailer volume shares of lamb sales in GB, 2021-2023



Source: Kantar

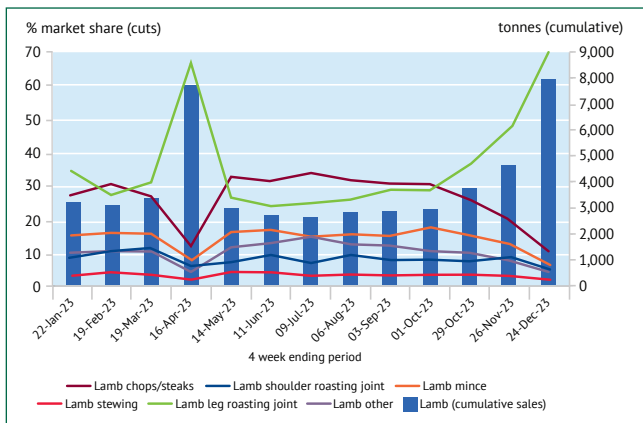
**Table 3.14** Changes in lamb purchases, expenditure and average price in Wales and GB, 2023

	Lamb purchases (tonnes)	Lamb purchases (% change)	Lamb expenditure (£ million)	Lamb expenditure (% change)	Lamb average price (£/kg)	Lamb average price (% change)
Wales	2,740	-3.6	31.0	-3.3	11.4	0.3
GB	51,049	3.7	604.2	5.2	11.8	1.5

Source: Kantar

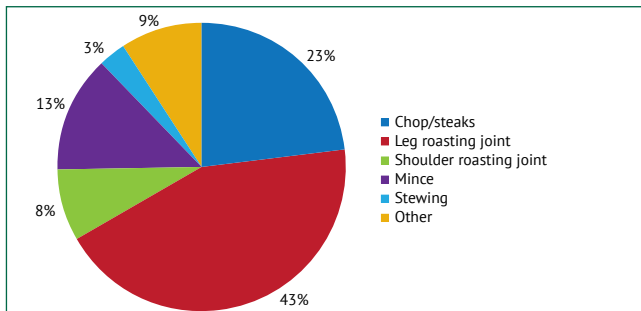
# Section 3 – Sheep

**Figure 3.5** Seasonality of lamb sales at GB retail by cut, 2023



Source: Kantar

**Figure 3.6** Retail lamb cuts sold in GB by volume, 2023



Source: Kantar

## Section 3 – Sheep

**Table 3.15** Retail prices for selected lamb cuts in Great Britain\*

	Whole leg	Shoulder (bone-in)	Chops	Standard Diced
(pence per kilogram)				
<b>2023 by month:</b>				
January	1,234.9	1,021.6	1,443.7	1,709.3
February	1,274.5	1,021.6	1,461.6	1,689.8
March	1,274.5	957.8	1,443.7	1,674.6
April	1,246.8	1,025.7	1,455.9	1,684.5
May	1,295.3	1,025.7	1,494.7	1,866.3
June	1,232.4	1,025.7	1,477.9	1,921.4
July	1,336.7	1,025.7	1,494.7	1,851.8
August	1,336.7	1,025.7	1,494.7	1,877.0
September	1,264.1	1,025.7	1,537.4	1,838.9
October	1,274.6	1,025.7	1,559.0	1,838.9
November	1,267.7	997.0	1,559.0	1,838.9
December	1,253.9	1,025.7	1,559.0	1,872.6

\* Prices obtained from a weekly survey of a number of supermarkets' websites each week, with the prices quoted above for the last week of each month (or the latest week available).

Source: AHDB

## Section 3 – Sheep

**Table 3.16** UK sheep meat balance sheet\*

	2021	2022	2023
	(000 tonnes)		
Production	282.9	291.2	286.0
Imports	55.0	67.0	59.4
Exports	71.5	77.2	87.0
Total consumption	266.3	281.0	258.4
Self sufficiency (%) **	106.2	103.6	110.7

\* Total supplies of meat available for consumption. All weights are carcase weight equivalent.

\*\*Further publication of the trade flow information is prohibited unless expressly permitted by Trade Data Monitor LLC

\*\*\*Self-sufficiency is based upon production as a percentage of consumption

Source: AHDB, Defra, UK HMRC compiled by Trade Data Monitor LLC

Please note this information may be subject to revision



# Section 4 – Pigs

**Table 4.1** Pig numbers in Wales by category

(000 head)	2021	2022	2023
Breeding pigs	3.0	2.6	2.4
Fattening pigs	24.2	24.3	22.4
Total pigs	27.2	26.9	24.8

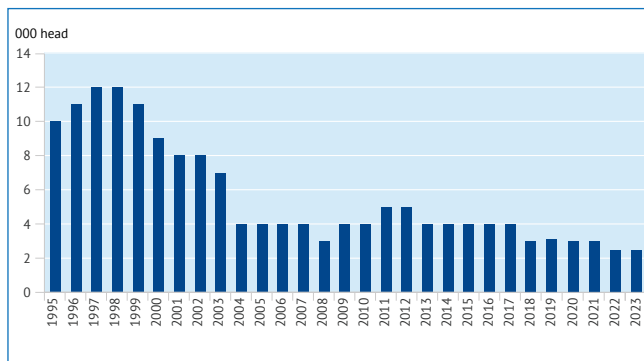
Source: Welsh Government

**Table 4.2** Changes in number of holdings in Wales with pigs

	June 2013	June 2023
Number of pig holdings	1,496	1,284
Average herd size (head)	17	19

Source: Welsh Government

**Figure 4.1** Changes in breeding pig numbers in Wales



Source: Welsh Government

## Section 4 – Pigs

**Table 4.3** Throughput of pigs in Welsh abattoirs

	Slaughterings (000 head)	Production (000 tonnes)
2021	28.3	2.5
2022	25.2	2.3
2023	21.4	1.9
<b>2023 by month:</b>		
January	1.9	0.2
February	1.6	0.1
March	1.7	0.1
April	1.6	0.1
May	1.8	0.2
June	1.6	0.1
July	2.0	0.2
August	1.8	0.2
September	1.8	0.2
October	1.9	0.2
November	2.1	0.2
December	1.8	0.2

Source: Defra

**Table 4.4** Total pig slaughterings by UK country, 2023

Wales	England	Scotland	Great Britain	Northern Ireland
(000 head)				
21	8,134	231	8,386	1,876

Source: Defra

## Section 4 – Pigs

**Table 4.5** Numbers and throughputs of abattoirs in Wales slaughtering pigs\*

Annual throughput:	Abattoirs (number)		Throughputs (000 head)	
	2022	2023	2022	2023
0-1,000	3	3	2.4	1.0
1,001 and over	5	5	23.0	20.2
<b>Total</b>	<b>8</b>	<b>8</b>	<b>25.4</b>	<b>21.2</b>

\* Figures from Welsh Red Meat Levy returns

Source: HCC

**Table 4.6** Volume and value of UK pig meat imports

	Fresh/frozen		Offal		Processed*
	(000 tonnes)	(£ million)	(000 tonnes)	(£ million)	(000 tonnes)
<b>2015</b>	371.8	613.4	12.4	11.3	514.0
<b>2016</b>	439.9	778.2	16.0	14.3	515.1
<b>2017</b>	467.0	943.9	18.1	17.8	512.6
<b>2018</b>	457.8	854.4	15.5	15.6	511.3
<b>2019</b>	447.9	951.1	17.1	18.4	451.6
<b>2020</b>	367.2	843.8	17.2	18.1	409.2
<b>2021</b>	321.1	661.4	15.3	17.8	395.5
<b>2022</b>	320.5	706.8	16.7	17.6	464.3
<b>2023</b>	331.5	965.1	16.4	22.3	433.8

\* Includes bacon, sausage, hams and canned pig meat.

Source: HM Revenue & Customs (HMRC)

## Section 4 – Pigs

**Table 4.7** Volume and value of UK pig meat exports

	Fresh/frozen		Offal		Processed*
	(000 tonnes)	(£ million)	(000 tonnes)	(£ million)	(000 tonnes)
<b>2015</b>	187.1	197.4	58.9	38.5	38.3
<b>2016</b>	206.1	252.3	77.0	64.4	35.4
<b>2017</b>	216.0	293.6	81.5	79.7	37.2
<b>2018</b>	217.8	291.8	88.4	79.1	40.3
<b>2019</b>	244.5	391.8	94.2	93.0	39.7
<b>2020</b>	258.4	420.3	106.0	121.5	33.3
<b>2021</b>	192.7	338.8	128.5	146.7	28.4
<b>2022</b>	189.4	333.4	145.6	184.7	37.7
<b>2023</b>	130.2	280.6	133.5	176.5	34.8

\* Includes bacon, sausage, hams and canned pig meat.

Source: HM Revenue & Customs (HMRC)

**Table 4.8** UK pig meat imports

		2021	2022	2023
		(000 tonnes, product weight)		
Total pork		320.1	320.5	331.5
Of which from:	Denmark	99.7	83.9	87.0
	Germany	97.4	81.5	73.5
	Spain	23.9	50.2	46.1
	Belgium	22.9	23.6	36.5
	Netherlands	29.7	33.6	35.4
	France	17.6	21.3	23.0
	Irish Republic	14.5	13.4	18.8
	Bacon	169.0	200.8	180.3
Of which from:	Netherlands	84.5	111.7	103.0
	Denmark	52.5	57.2	54.6

Source: HM Revenue & Customs (HMRC)

## Section 4 – Pigs

**Table 4.9** UK pig meat exports

		2021	2022	2023
		(000 tonnes, product weight)		
Fresh/Frozen Pork		192.7	189.4	130.2
Of which to:	China	83.2	58.1	46.1
	Irish Republic	18.2	22.1	19.6
	Germany	17.1	19.9	18.0
	France	14.6	19.8	13.4
	United States	7.1	7.4	6.7
	Philippines	13.8	17.4	5.6
Bacon		10.3	16.9	13.4
Of which to:	Irish Republic	7.6	12.8	9.5
	France	1.5	2.6	2.1

Source: HM Revenue & Customs (HMRC)

**Table 4.10** UK monthly pork trade, 2023

	UK pork imports	UK pork exports
	(000 tonnes, product weight)	
January	25.0	11.9
February	23.5	10.8
March	28.6	11.9
April	25.4	10.1
May	29.2	9.4
June	29.6	9.9
July	27.5	8.8
August	28.4	10.7
September	28.2	10.4
October	30.1	13.0
November	31.0	13.0
December	25.0	10.2

Source: HM Revenue & Customs (HMRC)

## Section 4 – Pigs

**Table 4.11** Deadweight pig prices in GB

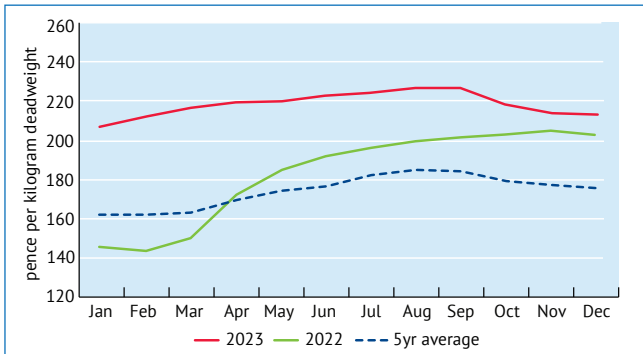
	SPP (EU Spec)	APP (EU Spec)
	(pence per kilogram deadweight)	
2021	148.3	153.1
2022	177.5	182.8
2023	217.4	217.8
<b>2023 by month:</b>		
January	202.9	206.9
February	207.7	211.0
March	213.3	215.8
April	218.2	219.4
May	220.7	220.2
June	222.9	221.9
July	225.0	223.3
August	225.3	224.4
September	223.3	223.0
October	219.7	219.1
November	216.7	215.9
December	214.6	214.3

EU specification excludes flare fat, kidney and diaphragm, the UK specification includes these parts.

Source: AHDB

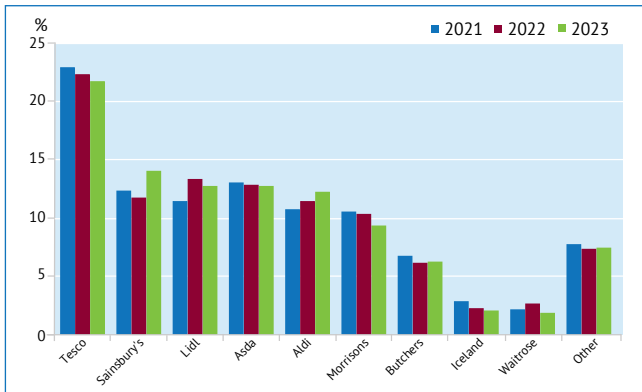
## Section 4 – Pigs

**Figure 4.2** Seasonality of deadweight pig APP EU-Spec prices, GB



EU specification excludes flare fat, kidney and diaphragm, the UK specification includes these parts.  
Source: AHDB

**Figure 4.3** Retailer volume shares of pork sales in GB, 2021-2023



Source: Kantar

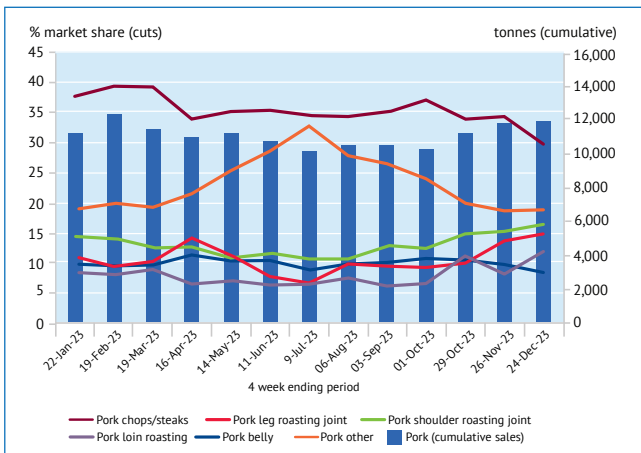
# Section 4 – Pigs

**Table 4.12** Changes in pork purchases, expenditure and average price in Wales and GB, 2023

	Pork purchases (tonnes)	Pork purchases (% change)	Pork expenditure (£ million)	Pork expenditure (% change)	Pork average price (£/kg)	Pork average price (% change)
Wales	7,000	-10.5	44.7	7.3	6.4	19.9
GB	144,280	-6.3	906.7	10.5	6.3	17.9

Source: Kantar

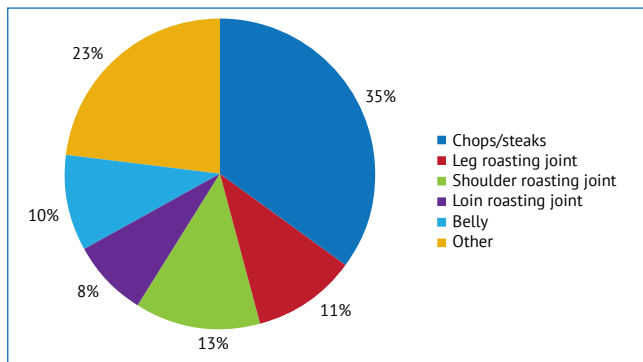
**Figure 4.4** Seasonality of pork sales at GB retail by cut, 2023



Source: Kantar



**Figure 4.5** Retail pork cuts sold in GB by volume, 2023



Source: Kantar

## Section 4 – Pigs

**Table 4.13** Retail prices for selected pig meat cuts in Great Britain\*

	Leg (boneless)	Loin steaks	Chops	Lean Mince
	(pence per kilogram)			
<b>2023 by month:</b>				
January	505.7	736.7	636.4	523.5
February	517.4	727.3	676.1	523.5
March	464.3	794.5	679.2	550.1
April	492.9	805.4	702.4	575.0
May	581.1	826.4	690.3	589.9
June	564.0	861.6	766.9	597.9
July	571.7	862.1	774.0	598.2
August	537.4	862.1	852.5	598.2
September	596.4	879.6	786.9	595.6
October	601.8	879.6	789.2	595.6
November	601.8	879.6	789.2	595.6
December	553.3	879.6	789.2	577.2

\* Prices obtained from a weekly survey of a number of supermarkets' websites each week, with the prices quoted above for the last week of each month (or the latest week available).

Source: AHDB

**Table 4.14** UK pork balance sheet\*

	2021	2022	2023
	(000 tonnes)		
Production	1,035.1	1,041.4	926.4
Imports	791.4	857.5	834.3
Exports	221.4	229.3	164.0
Total consumption	1,605.1	1,669.6	1,596.7
Self sufficiency **	64.5%	62.4%	58.0%

\* Total supplies of meat available for consumption. All weights are carcase weight equivalent.

\*\* Self-sufficiency is based upon production as a percentage of consumption.

Source: AHDB, Defra, IHS Maritime & Trade – Global Trade Atlas®/HMRC, Statistics Germany, Agenzia Tributaria, CSO Ireland, ONS.



# Hybu Cig Cymru Meat Promotion Wales



Hybu Cig Cymru-Meat Promotion Wales  
Tŷ Rheidol  
Parc Merlin,  
Aberystwyth, Ceredigion SY23 3FF

Email: [info@hybucig.cymru](mailto:info@hybucig.cymru)

© Hybu Cig Cymru 2024