



Hybu Cig Cymru
Meat Promotion Wales

Little Book of Meat Facts

Compendium of Welsh Red Meat
and Livestock Industry Statistics 2025



meatpromotion.wales

No part of this publication may be reproduced or transmitted in any form by any means without the prior written consent of HCC. Whilst all reasonable care has been taken in preparation, no warranty is given as to its accuracy and to the maximum extent permitted by law no liability accepted for any loss or damage caused by reliance upon any statement or omission from this publication.

Hybu Cig Cymru – Meat Promotion Wales (HCC) is the industry led organisation responsible for the development, promotion and marketing of Welsh red meat.

Development within the Industry

HCC undertakes research and development, dissemination of information and training relevant to each part of the supply chain, to ensure the Welsh red meat industry is in a position to improve quality, increase cost-effectiveness and add value to Welsh red meat products across the whole supply chain.

Market Development

HCC is active in many important markets worldwide: developing and strengthening business opportunities for Welsh red meat exporters. At home HCC works with retailers, independents and food service operators, undertaking regular promotional programmes for Protected Geographical Indication (PGI) Welsh Lamb and Welsh Beef.

Communicating

HCC ensures that information regarding developments relating to Welsh red meat are made known to stakeholders and consumers.

For more information on any of the above topics, please visit the website at **meatpromotion.wales** or contact HCC on **01970 625050** or by email at **info@hybucig.cymru**

Contents

Page

Section 1 – General Information

Figure 1.1	Most common farm types in Wales, by region, June 2024.....	7
Table 1.1	Human population and land area by Welsh region and UK country, 2024.....	8
Table 1.2	Agricultural holdings by size (ha) by UK country, 2024.....	8
Table 1.3	Welsh holdings by farm type, June 2024	9
Figure 1.2	Distribution of farms, cattle and sheep by farm type 2024.....	9
Table 1.4	Value of Welsh agricultural output, 2024 (p).....	10
Table 1.5	Contribution of agriculture to the regional UK economies, 2024 (p).....	10
Table 1.6	Farm business income by country and type of farm	11
Table 1.7	Direct payments to farmers in the UK	12
Table 1.8	Number and throughputs of all Welsh abattoirs	12
Figure 1.3	Changes in abattoir numbers in Wales.....	13
Table 1.9	Abattoirs in Wales slaughtering cattle, sheep and pigs, March 2025.....	14
Figure 1.4	Changes in total UK meat consumption	15
Figure 1.5	Changes in red meat purchases by product in GB, 2024	15
Figure 1.6	Comparison of retail market share by meat type in GB	16
Figure 1.7	Retailer volume share of total red meat trade in GB, 2024.....	16

Section 2 – Cattle

Figure 2.1	Beef cattle density in Wales, June 2023.....	17
Figure 2.2	Dairy cattle density in Wales, June 2023	18
Table 2.1	Welsh cattle numbers in Wales by category	19
Table 2.2	Changes in number of holdings in Wales with beef and dairy cows.....	19
Figure 2.3	Changes in cattle numbers in Wales	20
Figure 2.4	Calf registrations on holdings in Wales, 2024.....	20
Table 2.3	Throughput of cattle and calves in Welsh abattoirs	21
Table 2.4	Total cattle slaughterings by UK country, 2024.....	21
Table 2.5	Percentage distribution of steer carcasses in GB by conformation and fat class, 2024	22
Table 2.6	Number and throughputs of abattoirs in Wales	22
Figure 2.5	Age profile of male and female prime cattle at GB	23
Table 2.7	Suckler calf production costs in Wales, 2023/24	24
Table 2.8	Volume and value of UK beef imports.....	24
Table 2.9	Volume and value of UK beef exports.....	25
Table 2.10	UK beef imports	25
Table 2.11	UK beef exports	26
Table 2.12	UK monthly beef trade, 2024.....	26
Table 2.13	Deadweight cattle prices in England and Wales.....	27
Table 2.14	Deadweight cattle prices in GB	28
Figure 2.6	Seasonality of prime cattle deadweight prices, GB	29
Figure 2.7	Retailer volume share of beef sales in GB, 2022-2024.....	29
Table 2.15	Changes in beef purchases, expenditure and average price in Wales and GB, 2024	30
Figure 2.8	Seasonality of beef sales at GB retail by cut, 2024.....	30
Figure 2.9	Retail beef cuts sold in GB by volume, 2024.....	31
Table 2.16	Retail prices for selected beef cuts in Great Britain.....	32
Table 2.17	UK beef and veal balance sheet	32

Section 3 – Sheep

Figure 3.1	Sheep and lamb density in Wales, June 2023.....	33
Table 3.1	Sheep numbers in Wales by category.....	34
Table 3.2	Changes in number of holdings in Wales with sheep.....	34
Figure 3.2	Changes in total sheep and lamb numbers in Wales	34
Table 3.3	Throughput of total sheep in Welsh abattoirs.....	35
Table 3.4	Total sheep slaughterings by UK country, 2024.....	35
Table 3.5	Number and throughputs of abattoirs in Wales slaughtering sheep	36
Table 3.6	Percentage distribution of new season lamb carcasses in GB by conformation and fat class, 2024	36
Table 3.7	Lamb production costs in Wales, 2023/24.....	37
Table 3.8	Volume and value of UK sheep meat imports.....	38
Table 3.9	Volume and value of UK sheep meat exports.....	38
Table 3.10	UK sheep meat imports.....	39
Table 3.11	UK sheep meat exports	39
Table 3.12	UK monthly sheep meat trade, 2024	40
Table 3.13	Deadweight sheep prices in GB	41
Figure 3.3	Seasonality of sheep SQQ deadweight prices, GB	42
Figure 3.4	Retailer volume shares of lamb sales in GB, 2022-2024.....	43
Table 3.14	Changes in lamb purchases, expenditure and average price in Wales and GB, 2024	43
Figure 3.5	Seasonality of lamb sales at GB retail by cut, 2024.....	44
Figure 3.6	Retail lamb cuts sold in GB by volume, 2024	44
Table 3.15	Retail prices for selected lamb cuts in Great Britain	45
Table 3.16	UK sheep meat balance sheet.....	46

Section 4 – Pigs

Table 4.1	Pig numbers in Wales by category.....	47
Table 4.2	Changes in number of holdings in Wales with pigs.....	47
Figure 4.1	Changes in breeding pig numbers in Wales.....	47
Table 4.3	Throughput of pigs in Welsh abattoirs.....	48
Table 4.4	Total pig slaughterings by UK country, 2024.....	48
Table 4.5	Number and throughputs of abattoirs in Wales slaughtering pigs.....	49
Table 4.6	Volume and value of UK pig meat imports	49
Table 4.7	Volume and value of UK pig meat exports.....	50
Table 4.8	UK pig meat imports.....	50
Table 4.9	UK pig meat exports	51
Table 4.10	UK monthly pork trade, 2024.....	51
Table 4.11	Deadweight pig prices in GB	52
Figure 4.2	Seasonality of deadweight pig APP EU-Spec prices	53
Figure 4.3	Retailer volume share of pork sales in GB, 2022-2024	53
Table 4.12	Changes in pork purchases, expenditure and average price in Wales and GB, 2024	54
Figure 4.4	Seasonality of pork sales at GB retail by cut, 2024	54
Figure 4.5	Retail pork cuts sold in GB by volume, 2024	55
Table 4.13	Retail prices for selected pig meat cuts in Great Britain.....	56
Table 4.14	UK pig meat balance sheet.....	56

Notes and abbreviations

Where dates are written, for example, as 2023/24, this implies the financial year from April 2023 to March 2024. Volume data is shown in tonnes, carcase weight equivalent, unless otherwise specified.

Worldpanel by Numerator UK data for 2024 is for the 52-week period ending 29 December 2024. The Worldpanel by Numerator UK data was reported during November 2025 and is subject to revision.

Data obtained from both Defra and HMRC (HM Revenue & Customs) for 2024 was reported during November 2025 and is subject to revision.

North East Wales: Denbighshire, Flintshire, Conwy, Wrexham.

North West Wales: Isle of Anglesey, Gwynedd.

South Wales: Swansea, Neath Port Talbot, Bridgend, Vale of Glamorgan, Cardiff, Rhondda Cynon Taf, Merthyr Tydfil, Caerphilly, Blaenau Gwent, Torfaen, Monmouthshire, Newport

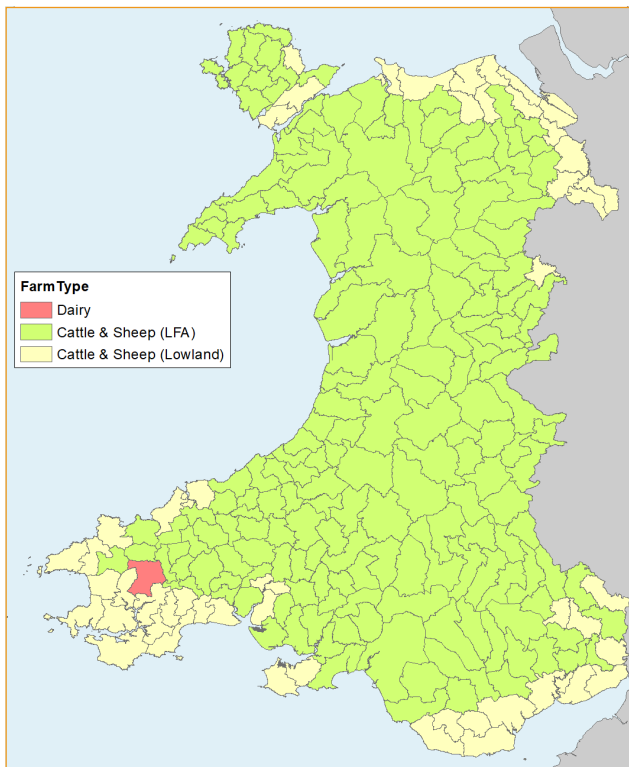
Figures in the tables do not always add up to the totals shown because of rounding.

AHDB	Agriculture and Horticulture Development Board
APP	All Pig Price
BCMS	British Cattle Movement Service
DAPP	Deadweight Average Pig Prices
DARDNI	Department of Agriculture and Rural Development Northern Ireland
Defra	Department for Environment, Food and Rural Affairs
EFS	Expenditure and Food Survey
EU	European Union
FSA	Food Standards Agency
GBU	GB Livestock Units
GVA	Gross Value Added
Ha	Hectare
HCC	Meat Promotion Wales
IAAS	Institute of Auctioneers and Appraisers in Scotland
LAA	Livestock Auctioneers Association
LFA	Less Favoured Area
RPA	Rural Payments Agency
SQQ	Standard Quality Quotation
SPP	Standard Pig Price

- = none
na= not available

Section 1 – General Information

Figure 1.1 Most common farm types in Wales, by region, June 2024



source: *Agricultural Small Area Statistics*, Crown copyright and database rights 2024
OS AC0000849488

Section 1 – General Information

Table 1.1 Human population and land area by Welsh region and UK country, 2024

	Human population (000 head)	Land area (sq km)
Carmarthenshire	191	2,372
Ceredigion	73	1,790
North East Wales	507	2,910
North West Wales	190	3,262
Pembrokeshire	126	1,619
Powys	135	5,196
South Wales	1,965	3,630
Wales	3,187	20,780
England	58,620	130,281
Scotland	5,547	77,925
Northern Ireland	1,928	13,576
United Kingdom	69,281	242,562

Source: Welsh Government

Table 1.2 Agricultural holdings by size (hectares) by UK country, 2024

	Wales	England	Scotland	Northern Ireland
Number of holdings (000)	37	102	44	26
Total area (000 ha)	1,775	8,877	5,155	1,040
Average area (ha)	47	87	118	40
% of total numbers				
<20 ha	56.6	40.8	60.4	44.2
20-49.9 ha	17.5	20.1	11.2	31.9
50-99.9 ha	13.5	15.8	9.4	15.8
>100 ha	13.6	23.6	18.2	8.3
% of total area on holdings with 100 hectares and over:				
	60.7	75.7	88.3	36.6

Source: Agriculture in the United Kingdom 2024, Defra

Section 1 – General Information

Table 1.3 Welsh holdings by farm type, June 2024

	Holdings (number)	Share of total (%)
Cattle and sheep (LFA)	5,895	15.7
Cattle and sheep (lowland)	1,048	2.8
Dairy	1,315	3.5
Mixed (a)	438	1.2
Cereals	355	0.9
Specialist pigs or poultry	163	0.4
Horticulture	119	0.3
General cropping	106	0.3
Other types (b)	117	0.3
Very small (c)	14,759	39.4
Dormant holdings	13,155	35.1
All types	37,470	

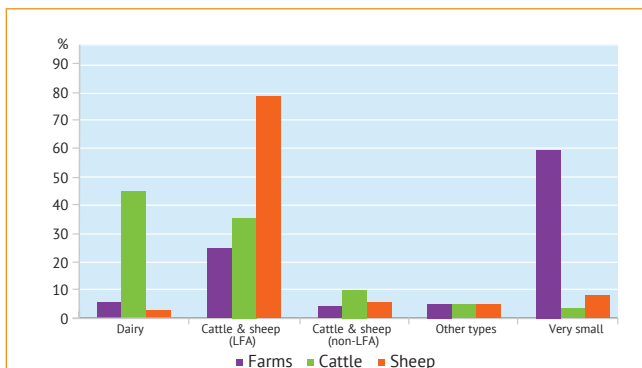
(a) Combination of cropping with various types of livestock

(b) Mainly grass and forage or specialist horses

(c) Holdings with small amounts of agricultural activity are grouped together irrespective of farm type.
Note: Numbers may not total 100% due to rounding.

Source: Welsh Government

Figure 1.2 Distribution of farms, cattle and sheep by farm type, 2024



Source: Welsh Government

Section 1 – General Information

Table 1.4 Value of Welsh agricultural output, 2024 (p)

	Value (£ million)	Share of total value %
Livestock (total)	943	42.6
of which are cattle	549	24.8
of which are sheep	319	14.4
of which are pigs	10	0.5
Milk & milk products	760	34.3
Poultry & eggs	164	7.4
Total cereal	59	2.7
Horticulture & potatoes	85	3.8
Other products	25	1.1
Capital formation in livestock (a)	71	3.2
Other agricultural activities	107	4.8
Total Wales	2,214	

(a) Investment in buildings, work physically undertaken by the farmer and the value of the physical increase in breeding livestock (p) Provisional.

Note: Numbers may not total 100% due to rounding.

Source: Welsh Government

Table 1.5 Contribution of agriculture to the regional UK economies, 2024 (p)

	Agricultural gross value added (GVA) at basic prices (£ million)	Total income from farming (£ million)
Wales	648	329
England	10,668	5,338
Scotland	2,190	726
Northern Ireland	na	766
United Kingdom	14,490	7,688

(p) Provisional

Note: England data based on commercial holdings only, and derived from other UK economic data.

Source: Welsh Government, DAERA, Defra

Section 1 – General Information

Table 1.6 Farm business income by country and type of farm

(At current prices)	2021/22	2022/23	2023/24
	(£000/farm)		
Wales:			
Dairy	88.0	165.0	67.5
Grazing livestock (LFA)	38.5	24.5	28.5
Grazing livestock (lowland)	26.5	18.5	23.0
England:			
Dairy	140.0	224.5	71.0
Grazing livestock (LFA)	43.0	27.0	23.5
Grazing livestock (lowland)	34.0	23.0	17.5
Specialist pigs	12.0	72.5	136.0
Scotland:			
Dairy	162.0	249.5	116.5
Grazing livestock (LFA)	23.5	24.0	17.5
Northern Ireland:			
Dairy	83.0	123.0	na
Grazing livestock (LFA)	23.0	18.0	na

Source: Agriculture in the United Kingdom 2024, Defra

Section 1 – General Information

Table 1.7 Agriculture support payments to farmers in the UK

	2023	2024 (p)
	(£ million)	
Agri-environment schemes	743	1,121
Basic/Single Payment Scheme	1,902	1,585
LFA support schemes	671	724
Animal disease compensation	55	45
Other (a)	911	951

(a) Includes various payments such as the Countryside Stewardship Scheme, Environmental Stewardship Scheme, the Sustainable Farming Incentive schemes, etc

(b) Includes various one off payments, advisory services, new entrants, restoration schemes, and Farming Investment Fund.

(p) Provisional

Source: *Agriculture in the United Kingdom 2024*, Defra.

Table 1.8 Number and throughputs of all Welsh abattoirs

GB Livestock Units*	Abattoirs (number)		Throughputs (%)	
	2023	2024	2023	2024
0-1,000	3	3	0.3	0.2
1,001-10,000	8	8	5.6	4.4
10,001-30,000	1	1	2.1	1.9
30,001-100,000	2	2	17.6	19.8
100,001 and over	3	3	74.5	73.7
Total	17	17		

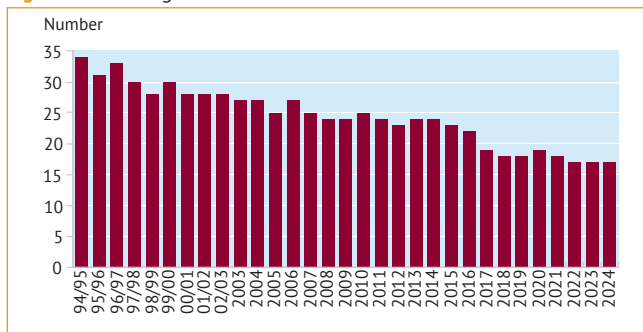
* GB Livestock Unit = 1 cattle beast = 5 sheep = 2 pigs

Note: Numbers may not total 100%, due to rounding.

Source: HCC

Section 1 – General Information

Figure 1.3 Changes in Welsh abattoir numbers*



* Figures for 2004-2024 are for calendar years; previous figures relate to year ended March.

Source: HCC

Section 1 – General Information

Table 1.9 Abattoirs in Wales slaughtering cattle, sheep and pigs, March 2025

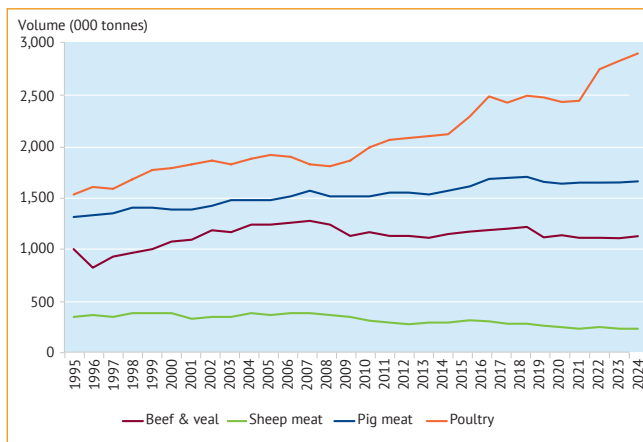
Trading Name	Location	Species Slaughtering		
Cig Cynfal Cymru Cyf	Blaenau Ffestiniog	Cattle	Sheep	
Cig Oen Caron	Tregaron	Cattle	Sheep	Pigs
Conwy Valley Meats Ltd	Llanrwst	Cattle	Sheep	
D & J Thomas	Wrexham	Cattle	Sheep	Pigs
Dunbia (Wales)	Llanybydder	Cattle	Sheep	
Euro Farm Wales	Haverfordwest	Cattle		
Farmers Fresh (Wales) Ltd	Wrexham		Sheep	
G R Evans & Co	Corwen	Cattle	Sheep	Pigs
Jones Brothers (Wrexham) Ltd	Wrexham	Cattle	Sheep	
Kepak Group Ltd	Merthyr Tydfil	Cattle	Sheep	
Lloyd West Ltd	Fishguard	Cattle	Sheep	
M K (Wales) Ltd	Maesteg	Cattle	Sheep	Pigs
Messers Havard, Caerphilly abattoir	Caerphilly		Sheep	
N S James	Raglan		Sheep	Pigs
Pilgrim's UK Lamb Ltd	Llanidloes		Sheep	
W J George Butchers Ltd	Brecon	Cattle	Sheep	Pigs

Plants listed in alphabetical order.

Source: HCC

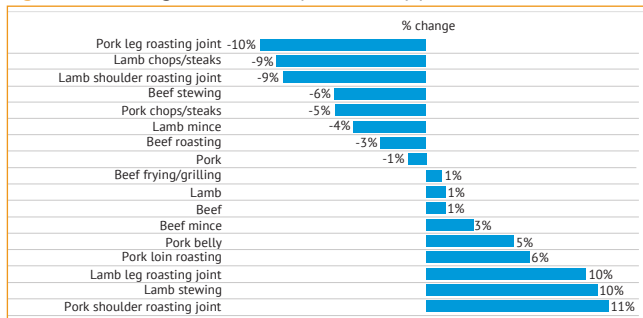
Section 1 – General Information

Figure 1.4 Changes in total UK meat consumption



Source: AHDB, Defra, UK HMRC compiled by Trade Data Monitor LLC

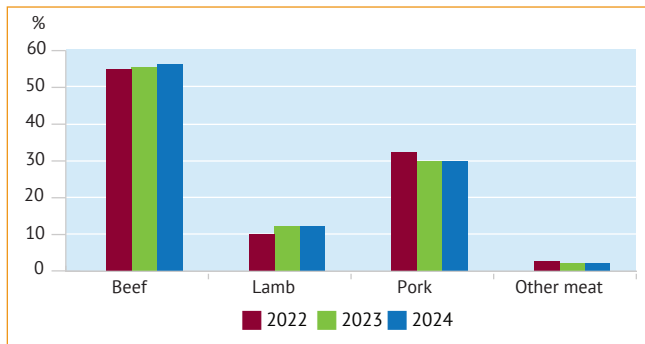
Figure 1.5 Changes in red meat purchases by product in GB, 2024



Source: Worldpanel by Numerator UK

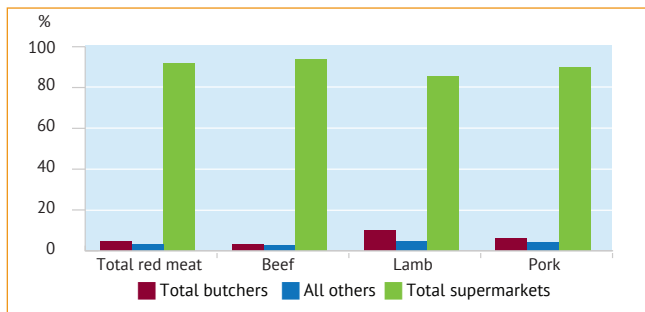
Section 1 – General Information

Figure 1.6 Comparison of retail market share by red meat type in GB



Source: Worldpanel by Numerator UK

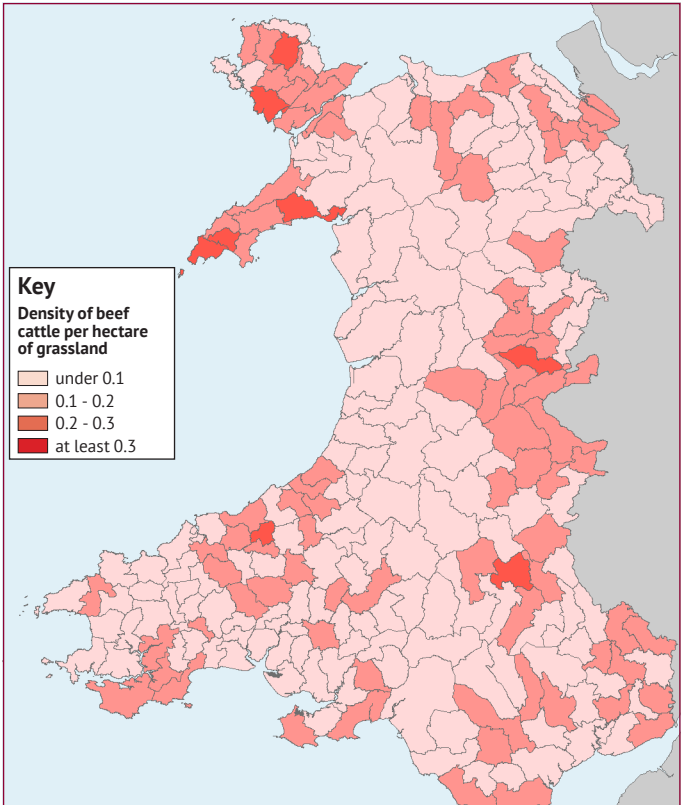
Figure 1.7 Retailer volume share of total red meat trade in GB, 2024



Source: Worldpanel by Numerator UK

Section 2 – Cattle

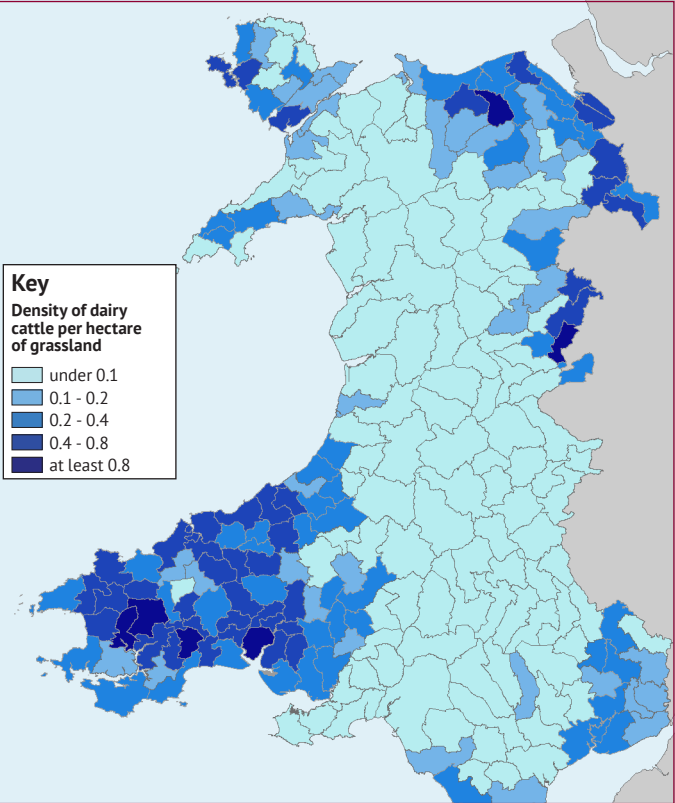
Figure 2.1 Beef cattle density in Wales, June 2023



source: Agricultural Small Area Statistics, Crown copyright and database rights 2024 OS AC0000849488

Section 2 – Cattle

Figure 2.2 Dairy cattle density in Wales, June 2023



source: Agricultural Small Area Statistics, Crown copyright and database rights 2024 OS AC0000849488

Section 2 – Cattle

Table 2.1 Welsh cattle numbers by category

(000 head)	June 2022	June 2023	June 2024
Cattle aged 2 years or more	518	513	501
– Female dairy breeds	289	290	288
– Female non-dairy breeds	196	188	179
– Males	33	35	35
Cattle aged 1-2 years	273	272	268
– Female dairy breeds	81	82	77
– Female non-dairy breeds	94	92	95
– Males	99	98	96
Cattle under 1 year	341	333	321
– Female dairy breeds	87	82	78
– Female non-dairy breeds	116	117	114
– Males	138	134	129
Total cattle and calves	1,132	1,117	1,090

Source: Cattle Tracing System

Table 2.2 Changes in number of holdings in Wales with beef and dairy cows

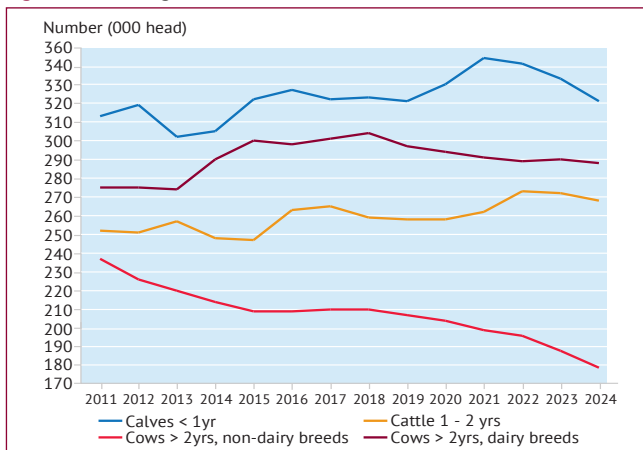
	June 2014	June 2024
Dairy females (a)	234,305	251,313
Number of dairy cow holdings	2,825	2,170
Average dairy herd size (head)	83	116
Beef females (a)	167,799	140,659
Number of beef cow holdings	7,672	6,341
Average beef size herd (head)	22	22
Total number of cattle and calf holdings	10,906	9,389

(a) Females aged 2 years or more that have calved

Source: Cattle Tracing System

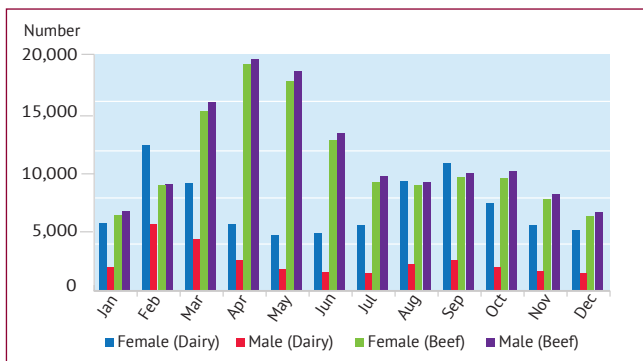
Section 2 – Cattle

Figure 2.3 Changes in cattle numbers in Wales



Source: Cattle Tracing System

Figure 2.4 Calf registrations on holdings in Wales, 2024



Source: Cattle Tracing System

Section 2 – Cattle

Table 2.3 Throughput of cattle and calves in Welsh abattoirs

	Slaughterings (000 head)	Production (000 tonnes)
2022	121.9	38.3
2023	172.8	51.3
2024	189.6	55.7
2024 by month:		
January	16.9	5.0
February	15.6	4.6
March	15.0	4.4
April	16.4	4.9
May	17.4	5.0
June	15.4	4.6
July	16.0	5.0
August	14.0	4.1
September	15.5	4.5
October	18.5	5.3
November	15.7	4.4
December	13.3	3.8

Source: Defra

Table 2.4 Total cattle slaughterings by UK country, 2024

Wales	England	Scotland	Great Britain	Northern Ireland
(000 head)				
190	1,714	409	2,313	518

Source: Defra

Section 2 – Cattle

Table 2.5 Percentage distribution of steer carcasses in GB by conformation and fat class, 2024

		Fat class Increasing fatness							
Conformation class Improving conformation		1	2	3	4L	4H	5L	5H	Overall
	E	0.0	0.1	0.2	0.0	0.0	0.0	0.0	0.3
	U+	0.1	0.9	1.7	0.4	0.0	0.0	0.0	3.2
	-U	0.1	1.6	5.9	4.1	0.5	0.0	0.0	12.2
	R	0.2	5.5	23.4	15.4	3.1	0.2	0.0	47.8
	O+	0.2	3.0	13.6	8.4	1.2	0.1	0.0	26.5
	-O	0.1	1.7	5.1	1.5	0.1	0.0	0.0	8.6
	P+	0.1	0.5	0.5	0.1	0.0	0.0	0.0	1.1
	-P	0.0	0.1	0.0	0.0	0.0	0.0	0.0	0.1
	Overall	0.9	13.3	50.5	29.9	5.1	0.3	0.0	

Source: AHDB

Table 2.6 Number and throughputs of abattoirs in Wales slaughtering cattle*

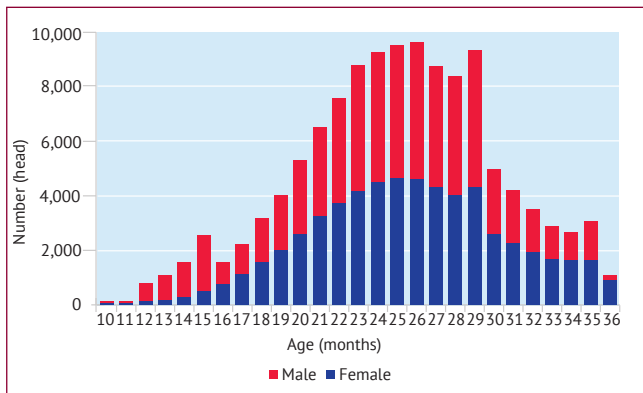
Annual throughput:	Abattoirs (number)		Throughputs (000 head)	
	2023	2024	2023	2024
0-1,000	9	7	4.1	1.4
1,001-5,000	1	4	2.0	8.4
5,001 and over	4	3	152.7	170.4
Total	14	14	158.7	180.2

* Figures from Welsh Red Meat Levy returns

Source: HCC

Section 2 – Cattle

Figure 2.5 Age profile of male and female prime cattle at GB abattoirs, 2024



Source: Cattle Tracing System

Section 2 – Cattle

Table 2.7 Suckler calf production costs in Wales, 2023/24

	All farms (average)	Bottom third (high cost)	Top third (low cost)
	(pence per kg liveweight)		
Feed & forage	57	80	40
Veterinary & medicines	12	14	8
Other	20	25	13
Total variable costs	89	119	61
Herd replacement	-3	8	-15
Labour	10	19	1
Power & machinery	67	95	54
Finance & general farm costs	59	76	36
Rent	7	14	4
Total fixed costs	142	191	89
Total costs	228	332	140

* Data released to financial year ended March 2024. Based on 30 suckler herds.

Top third and bottom third rankings are determined by net margin.

Total costs comprise variable, fixed and herd replacement costs.

Source: Farm Business Survey in Wales

Table 2.8 Volume and value of UK beef imports

	Fresh/frozen beef and veal		Offal	
	(000 tonnes)	(£ million)	(000 tonnes)	(£ million)
2017	274.7	1,073.9	9.1	15.7
2018	290.0	1,168.4	18.9	21.7
2019	251.0	991.7	20.2	17.9
2020	232.9	924.0	15.7	16.6
2021	241.9	1,067.0	13.1	22.6
2022	233.3	1,241.2	18.0	37.2
2023	223.4	1,244.2	17.5	35.8
2024	240.7	1,386.1	19.7	44.1

Note: Volumes are shipped product weight.

Source: HM Revenue & Customs (HMRC)

Section 2 – Cattle

Table 2.9 Volume and value of UK beef exports

	Fresh/frozen beef and veal		Offal	
	(000 tonnes)	(£ million)	(000 tonnes)	(£ million)
2017	105.6	405.1	40.1	56.5
2018	110.5	435.1	38.4	59.3
2019	135.8	464.2	48.7	70.8
2020	116.2	381.9	49.5	68.8
2021	102.9	364.0	26.6	47.2
2022	123.7	540.5	26.6	59.0
2023	103.7	489.5	25.0	61.0
2024	112.6	567.2	28.3	70.3

Note: Volumes are shipped product weight.

Source: HM Revenue & Customs (HMRC)

Table 2.10 UK beef imports

		2022	2023	2024
		(000 tonnes, product weight)		
Total beef and veal		233.3	223.4	240.7
Of which from:	Irish Republic	168.5	163.4	185.3
	Poland	16.8	18.9	16.8
	Netherlands	11.5	9.5	7.1
	Australia	0.9	2.0	5.5
	Brazil	4.4	4.9	5.0
	New Zealand	0.9	1.9	4.1
	Uruguay	3.0	2.5	3.3
	Belgium	1.9	1.8	2.2

Source: HM Revenue & Customs (HMRC)

Section 2 – Cattle

Table 2.11 UK beef exports

		2022	2023	2024
		(000 tonnes, product weight)		
Total beef and veal		123.7	103.7	112.6
Of which to:	Irish Republic	36.5	35.1	32.5
	France	30.4	24.2	27.9
	Netherlands	21.9	17.4	19.8
	Hong Kong	4.3	4.6	5.7
	Canada	1.9	0.9	3.6
	Germany	3.4	3.3	3.5
	Italy	3.1	2.9	2.9
	Belgium	2.7	2.3	2.6

Source: HM Revenue & Customs (HMRC)

Table 2.12 UK monthly beef trade, 2024

	UK beef imports	UK beef exports
	(000 tonnes, product weight)	
January	23.9	8.9
February	19.7	9.0
March	18.4	9.2
April	19.3	9.7
May	19.1	9.5
June	19.8	9.7
July	18.6	8.6
August	19.1	8.3
September	18.9	9.3
October	21.3	10.3
November	22.7	11.0
December	20.0	9.0

Source: HM Revenue & Customs (HMRC)

Section 2 – Cattle

Table 2.13 Deadweight cattle prices in England and Wales*

	R4L steers	R4L young bulls	R4L heifers	-O4L cows
	(pence per kilogram deadweight)			
2022	439.8	433.1	439.3	353.3
2023	485.3	471.1	484.1	372.6
2024	506.7	488.0	505.8	378.8
2024 by month:				
January	501.3	485.3	499.0	355.3
February	504.0	486.0	503.2	364.4
March	502.5	482.7	501.2	373.0
April	495.5	482.3	494.8	381.5
May	492.5	478.4	490.8	386.9
June	486.0	472.1	486.3	386.9
July	489.9	478.1	490.0	386.3
August	501.0	489.4	500.5	383.4
September	511.8	495.6	510.6	386.7
October	520.8	503.8	518.9	379.3
November	535.8	521.4	534.0	382.3
December	555.3	539.9	552.0	395.9

* Prices collected from a sample of abattoirs slaughtering more than 20,000 cattle annually.

Source: AHDB

Section 2 – Cattle

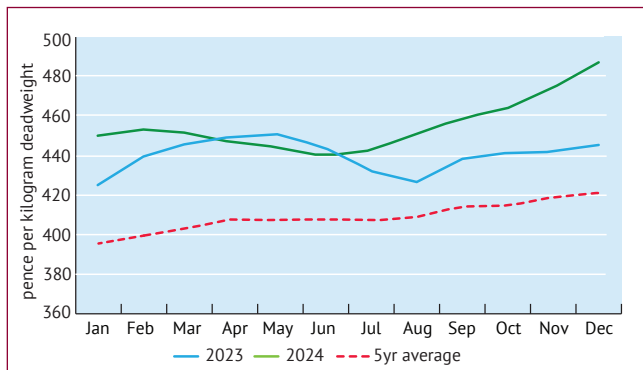
Table 2.14 Deadweight cattle prices in GB*

	R4L steers	R4L young bulls	R4L heifers	-O4L cows
	(pence per kilogram liveweight)			
2022	441.1	434.4	441.5	353.3
2023	488.2	473.9	487.0	373.0
2024	508.5	487.3	508.4	378.8
2024 by month:				
January	502.3	485.0	500.4	355.2
February	505.9	486.7	505.1	364.1
March	502.8	484.3	502.1	372.7
April	495.3	481.9	495.4	381.3
May	492.2	477.0	491.6	386.7
June	485.2	471.8	486.4	386.4
July	490.3	476.8	490.9	386.0
August	502.4	489.2	501.9	383.5
September	514.9	497.5	513.6	386.8
October	524.6	509.0	523.6	379.7
November	539.3	524.9	537.3	382.1
December	558.0	540.7	555.6	396.1

*Price collected from abattoirs slaughtering more than 20,000 adult cattle annually.
Source: AHDB

Section 2 – Cattle

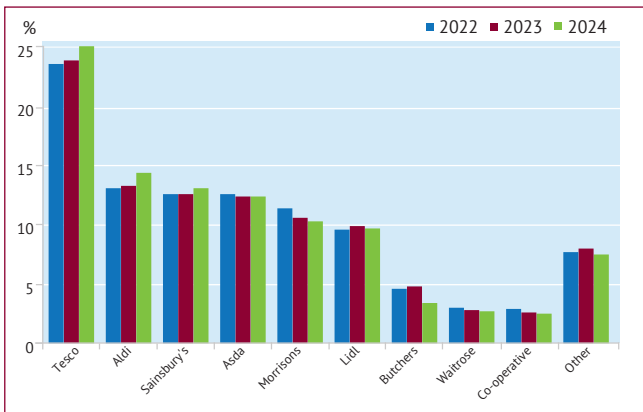
Figure 2.6 Seasonality of prime cattle deadweight prices, GB



Price collected from abattoirs slaughtering more than 20,000 adult cattle annually.

Source: AHDB

Figure 2.7 Retailer volume share of beef sales in GB 2022-2024



Source: Worldpanel by Numerator UK

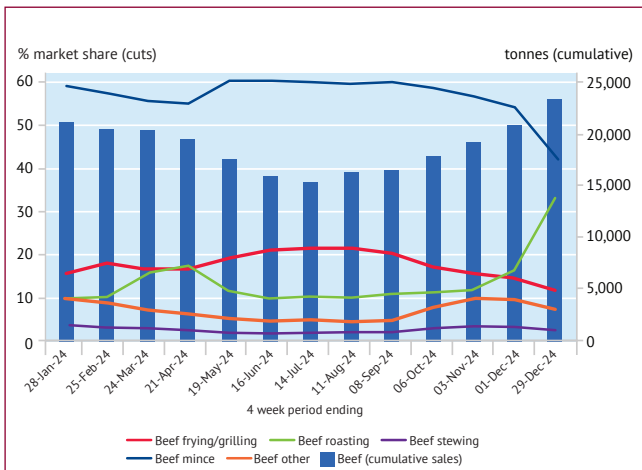
Section 2 – Cattle

Table 2.15 Changes in beef purchases, expenditure and average price in Wales and GB, 2024

	Beef purchases (tonnes)	Beef purchases (% change)	Beef expenditure (£ million)	Beef expenditure (% change)	Beef average price (£/kg)	Beef average price (% change)
Wales	12,019	-2.1	120.9	3.9	10.1	6.1
GB	251,882	1.2	2,467.9	6.3	9.8	5.0

Source: Worldpanel by Numerator UK

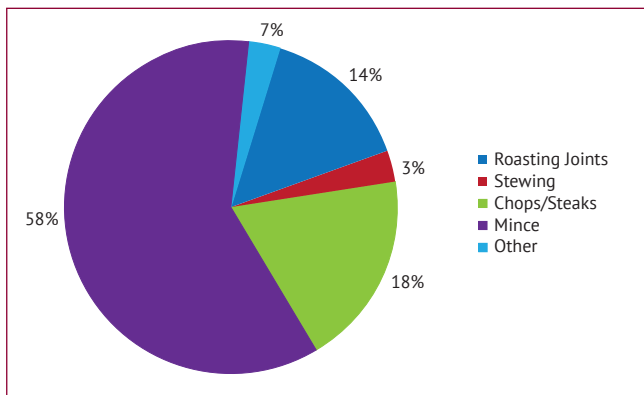
Figure 2.8 Seasonality of beef sales at GB retail by cut, 2024



Source: Worldpanel by Numerator UK

Section 2 – Cattle

Figure 2.9 Retail beef cuts sold in GB by volume, 2024



Source: Worldpanel by Numerator UK

Section 2 – Cattle

Table 2.16 Retail prices for selected beef cuts in Great Britain*

	Roasting Joint	Sirloin Steak	Fillet Steak	Standard Mince
	(pence per kilogram)			
2024 by month:				
January	1,141.2	2,027.1	3,442.6	500.3
February	1,141.2	2,033.6	3,404.1	500.3
March	932.1	2,035.5	3,442.6	500.3
April	1,141.4	2,035.5	3,442.6	500.3
May	1,105.1	2,031.6	3,436.0	500.1
June	1,137.4	2,031.6	3,436.0	500.1
July	1,168.9	2,028.8	3,436.0	500.1
August	1,185.4	2,028.8	3,436.0	500.1
September	1,172.5	2,007.5	3,436.0	500.1
October	1,217.8	2,056.5	3,335.1	499.8
November	1,217.8	2,081.8	3,487.5	506.6
December	1,071.4	2,081.0	3,543.7	537.5

* Prices obtained from a weekly survey of a number of supermarkets' websites each week, with the prices quoted above for the last week of each month (or the latest week available).

Source: AHDB

Table 2.17 UK beef and veal balance sheet*

	2022	2023	2024
	(000 tonnes)		
Production	923.4	900.5	934.3
Imports	359.9	345.9	364.4
Exports	157.9	131.8	143.2
Total consumption	1,125.4	1,114.6	1,155.5
Self sufficiency (%) **	80.2	80.8	80.9

* Total supplies of meat available for consumption. All weights are carcase weight equivalent.

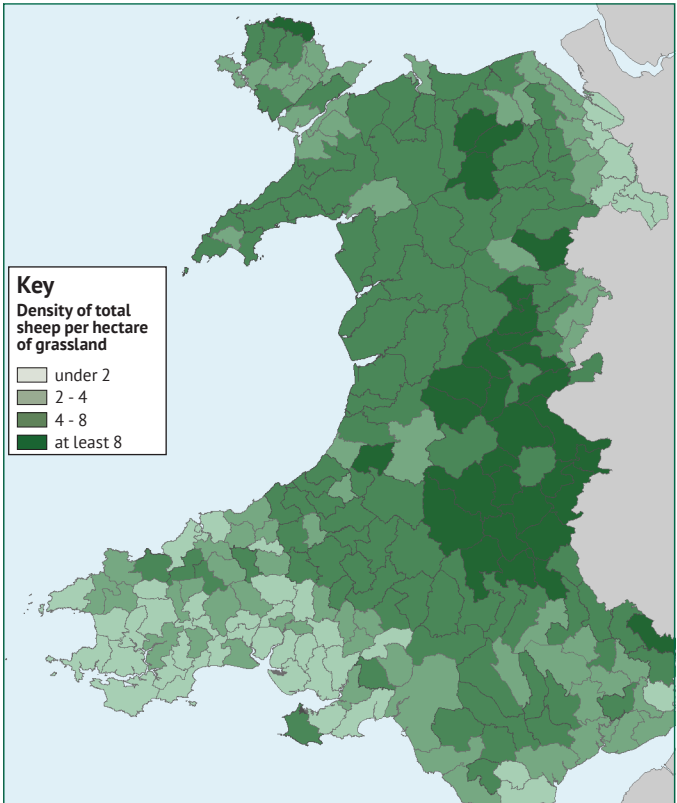
**Self-sufficiency is based upon production as a percentage of consumption

Source: AHDB, Defra, UK HMRC compiled by Trade Data Monitor LLC

Please note this information may be subject to revision

Section 3 – Sheep

Figure 3.1 Sheep and lamb density in Wales, June 2023



source: Agricultural Small Area Statistics, Crown copyright and database rights 2024 OS AC0000849488

Section 3 – Sheep

Table 3.1 Sheep numbers in Wales by category

(000 head)	June 2022	June 2023	June 2024
Total sheep, over one year	4,780	4,586	4,535
Lambs under one year	4,573	4,109	4,214
Total sheep and lambs	9,352	8,695	8,749

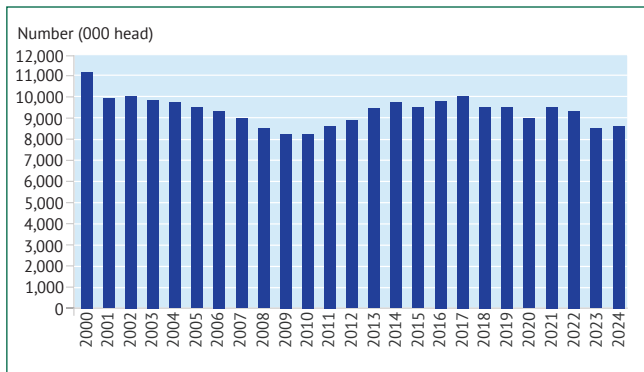
Source: Welsh Government

Table 3.2 Changes in number of holdings in Wales with sheep

	June 2014	June 2024
Number of sheep and lamb holdings	14,317	13,625
Average flock size (head)	680	642

Source: Welsh Government

Figure 3.2 Changes in total sheep and lamb numbers in Wales



Source: Welsh Government

Section 3 – Sheep

Table 3.3 Throughput of total sheep in Welsh abattoirs

	Slaughterings (000 head)	Production (000 tonnes)
2022	2,470.1	47.4
2023	2,416.0	46.1
2024	1,933.4	37.0
2024 by month:		
January	191.8	3.7
February	150.5	2.9
March	149.2	2.9
April	121.0	2.4
May	128.7	2.6
June	135.6	2.6
July	162.1	3.1
August	165.1	3.1
September	170.1	3.2
October	193.9	3.6
November	178.9	3.4
December	186.5	3.4

Source: Defra

Table 3.4 Total sheep slaughterings by UK country, 2024

Wales	England	Scotland	Great Britain	Northern Ireland
(000 head)				
1,933	9,529	939	12,402	451

Source: Defra

Section 3 – Sheep

Table 3.5 Number and throughputs of abattoirs in Wales slaughtering sheep*

Annual throughput:	Abattoirs (number)		Throughputs (000 head)	
	2023	2024	2023	2024
0-5,000	4	6	10.1	12.4
5,001-20,000	6	5	67.5	47.7
20,001-50,000	2	1	57.1	26.6
50,001 and over	4	4	2,274.9	1,871.2
Total	16	16	2,409.6	1,957.9

* Figures from Welsh Red Meat Levy returns

Source: HCC

Table 3.6 Percentage distribution of new season lamb carcasses in GB by conformation and fat class, 2024

		Fat class Increasing fatness						
Conformation class Improving conformation		1	2	3L	3H	4L	4H	5
	E	0.0	0.5	1.8	0.5	0.1	0.0	0.0
	U	0.1	2.6	10.7	4.9	1.0	0.1	0.0
	R	0.4	12.9	32.0	12.4	2.0	0.1	0.0
	O	0.6	7.2	6.9	1.8	0.2	0.0	0.0
	P	0.4	0.5	0.0	0.0	0.0	0.0	0.0
	Overall	1.6	23.8	51.4	19.7	3.3	0.2	0.0
	Overall							

Source: AHDB

Section 3 – Sheep

Table 3.7 Lamb production costs in Wales, 2023/24*

	All farms (average)	Bottom third (high cost)	Top third (low cost)
	(pence per kg liveweight)		
Feed & forage	90	105	71
Veterinary & medicines	16	19	15
Other	25	27	24
Total variable costs	132	151	110
Flock replacement	27	32	20
Paid Labour	10	19	5
Power & machinery	65	95	40
Finance & general farm costs	57	80	39
Rent	10	12	9
Total fixed costs	142	207	94
Total costs	301	390	224

* Data relates to financial year ended March 2024. Based on 127 farms.

Top third and bottom third rankings are determined by net margin.

Total costs comprise variable, fixed and flock replacement costs.

Source: Farm Business Survey in Wales

Section 3 – Sheep

Table 3.8 Volume and value of UK sheep meat imports

	Fresh/frozen sheep meat		Offal	
	(000 tonnes)	(£ million)	(000 tonnes)	(£ million)
2017	80.0	369.3	7.6	11.0
2018	77.6	373.3	8.8	14.2
2019	62.7	311.6	8.3	15.8
2020	57.1	308.9	5.9	13.7
2021	46.5	260.8	5.9	14.3
2022	54.3	342.0	7.4	20.9
2023	48.4	243.6	5.7	17.6
2024	67.9	325.5	7.5	18.4

Note: Volumes are shipped product weight.

Source: HM Revenue & Customs (HMRC)

Table 3.9 Volume and value of UK sheep meat exports

	Fresh/frozen sheep meat		Offal	
	(000 tonnes)	(£ million)	(000 tonnes)	(£ million)
2017	89.8	385.1	5.7	9.4
2018	83.2	367.6	5.2	8.9
2019	95.1	399.4	5.8	8.7
2020	87.5	436.4	5.4	8.9
2021	69.9	438.1	2.9	5.6
2022	75.3	494.2	3.2	6.5
2023	84.5	546.5	5.1	11.2
2024	79.5	582.8	5.7	11.9

Note: Volumes are shipped product weight.

Source: HM Revenue & Customs (HMRC)

Section 3 – Sheep

Table 3.10 UK sheep meat imports

		2022	2023	2024
		(000 tonnes, product weight)		
Total sheep meat		54.3	48.4	67.9
Of which from:	New Zealand	32.5	26.4	40.7
	Australia	9.6	11.4	17.9
	Irish Republic	9.4	8.1	6.9
	Iceland	0.5	0.5	0.7
	Falkland Islands	0.5	0.5	0.5

Source: HM Revenue & Customs (HMRC)

Table 3.11 UK sheep meat exports

		2022	2023	2024
		(000 tonnes, product weight)		
Total sheep meat		75.3	84.5	79.5
Of which to:	France	35.5	42.9	42.8
	Germany	14.1	15.9	13.5
	Belgium	7.3	7.1	9.2
	Netherlands	1.7	3.6	4.5
	Italy	2.6	3.5	2.9
	Portugal	0.3	1.2	1.0

Source: HM Revenue & Customs (HMRC)

Section 3 – Sheep

Table 3.12 UK monthly sheep meat trade, 2024

	UK sheep meat imports	UK sheep meat exports
	(000 tonnes, product weight)	
January	3.9	6.8
February	5.3	6.4
March	7.0	7.2
April	5.0	5.5
May	5.6	5.3
June	7.0	6.2
July	7.2	5.3
August	6.3	6.2
September	7.0	6.6
October	5.0	7.4
November	4.6	7.8
December	4.1	8.8

Source: HM Revenue & Customs (HMRC)

Section 3 – Sheep

Table 3.13 Deadweight sheep prices in GB*

	Standard Quality Quotation (SQQ)	
	R3L	All grades
	(pence per kilogram deadweight)	
2022	570.7	567.3
2023	578.9	578.1
2024	690.7	693.3
2024 by month:		
January	623.3	620.4
February	696.8	693.0
March	802.4	797.8
April	850.1	842.7
May	851.2	841.8
June	782.0	782.4
July	655.7	655.1
August	666.7	665.3
September	645.2	644.7
October	621.1	618.6
November	657.0	655.1
December	691.0	690.3

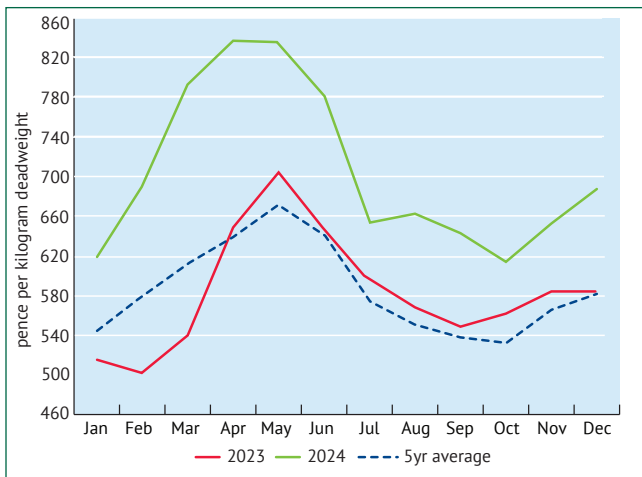
*Prices collected from a sample of GB abattoirs.

Old season prices are recorded until the third Monday in May, and new season prices for the remainder of the year.

Source: AHDB

Section 3 – Sheep

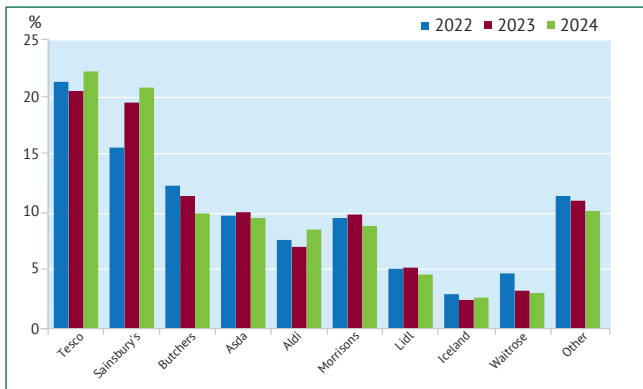
Figure 3.3 Seasonality of sheep SQQ* deadweight prices, GB



*Standard Quality Quotation (SQQ) includes animals weighing 12-21.5kg dw.
Old season prices are recorded until the third Monday in May, and new season prices for the remainder of the year. Prices collected from a sample of GB abattoirs.
Source: AHDB

Section 3 – Sheep

Figure 3.4 Retailer volume shares of lamb sales in GB, 2022-2024



Source: Worldpanel by Numerator UK

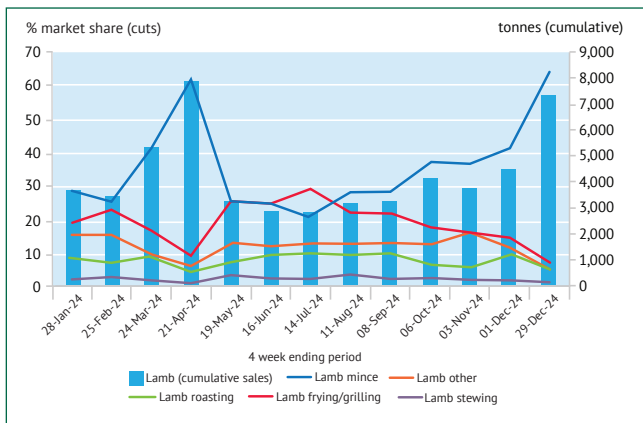
Table 3.14 Changes in lamb purchases, expenditure and average price in Wales and GB, 2024

	Lamb purchases (tonnes)	Lamb purchases (% change)	Lamb expenditure (£ million)	Lamb expenditure (% change)	Lamb average price (£/kg)	Lamb average price (% change)
Wales	2,899	1.7	33.8	9.9	11.7	8.1
GB	55,531	1.1	654.5	5.3	11.8	4.1

Source: Worldpanel by Numerator UK

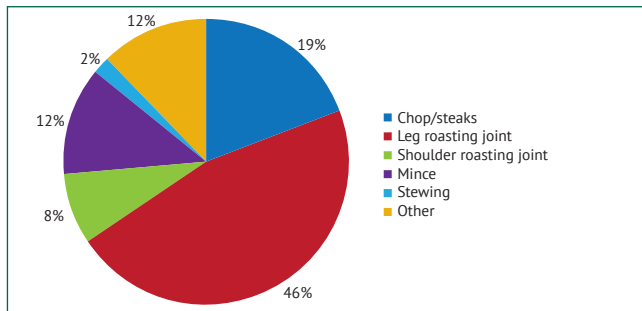
Section 3 – Sheep

Figure 3.5 Seasonality of lamb sales at GB retail by cut, 2024



Source: Worldpanel by Numerator UK

Figure 3.6 Retail lamb cuts sold in GB by volume, 2024



Source: Worldpanel by Numerator UK

Section 3 – Sheep

Table 3.15 Retail prices for selected lamb cuts in Great Britain*

	Whole leg	Shoulder (bone-in)	Chops	Standard Diced
	(pence per kilogram)			
2024 by month:				
January	1,316.0	1,017.4	1,559.0	1,826.5
February	1,316.0	1,025.7	1,563.5	1,826.5
March	1,178.1	1,037.2	1,563.5	1,826.5
April	1,368.1	1,061.2	1,588.7	1,867.9
May	1,383.1	1,166.2	1,684.8	2,141.1
June	1,404.1	1,166.2	1,725.7	2,141.1
July	1,427.4	1,192.3	1,755.9	2,118.4
August	1,462.5	1,216.2	1,761.2	2,146.4
September	1,439.7	1,196.1	1,761.2	2,146.4
October	1,449.1	1,216.2	1,766.6	2,104.5
November	1,482.6	1,216.2	1,737.4	2,169.7
December	1,361.6	1,216.2	1,755.7	2,169.7

* Prices obtained from a weekly survey of a number of supermarkets' websites each week, with the prices quoted above for the last week of each month (or the latest week available).

Source: AHDB

Section 3 – Sheep

Table 3.16 UK sheep meat balance sheet*

	2022	2023	2024
	(000 tonnes)		
Production	291.2	286.1	266.5
Imports	67.0	59.4	83.3
Exports	77.2	87.0	81.7
Total consumption	281.0	258.3	268.1
Self sufficiency (%) **	103.6	110.7	99.4

* Total supplies of meat available for consumption. All weights are carcase weight equivalent.

**Self-sufficiency is based upon production as a percentage of consumption

Source: AHDB, Defra, UK HMRC compiled by Trade Data Monitor LLC

Please note this information may be subject to revision

Section 4 – Pigs

Table 4.1 Pig numbers in Wales by category

(000 head)	2022	2023	2024
Breeding pigs	2.6	2.4	2.2
Fattening pigs	24.3	22.4	25.7
Total pigs	26.9	24.8	27.9

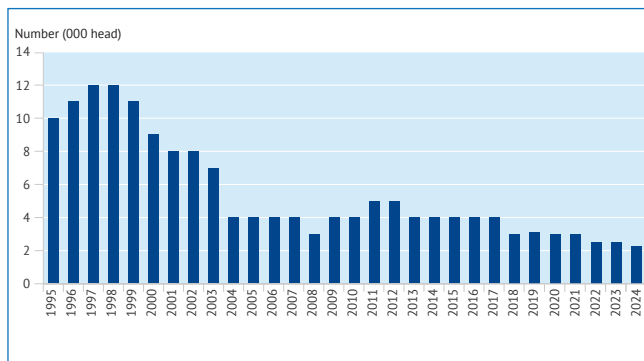
Source: Welsh Government

Table 4.2 Changes in number of holdings in Wales with pigs

	June 2014	June 2024
Number of pig holdings	1,478	1,271
Average herd size (head)	19	22

Source: Welsh Government

Figure 4.1 Changes in breeding pig numbers in Wales



Source: Welsh Government

Section 4 – Pigs

Table 4.3 Throughput of pigs in Welsh abattoirs

	Slaughterings (000 head)	Production (000 tonnes)
2022	25.2	2.3
2023	21.4	1.9
2024	21.6	1.9
2024 by month:		
January	1.9	0.2
February	1.6	0.1
March	1.6	0.1
April	1.8	0.2
May	1.7	0.1
June	1.7	0.2
July	2.0	0.2
August	1.8	0.2
September	2.0	0.2
October	1.8	0.2
November	1.9	0.2
December	1.8	0.2

Source: Defra

Table 4.4 Total pig slaughterings by UK country, 2024

Wales	England	Scotland	Great Britain	Northern Ireland
(000 head)				
22	8,288	240	8,550	1,912

Source: Defra

Section 4 – Pigs

Table 4.5 Numbers and throughputs of abattoirs in Wales slaughtering pigs*

Annual throughput:	Abattoirs (number)		Throughputs (000 head)	
	2023	2024	2023	2024
0-1,000	3	1	1.0	0.2
1,001 and over	5	5	20.2	21.5
Total	8	6	21.2	21.7

* Figures from Welsh Red Meat Levy returns

Source: HCC

Table 4.6 Volume and value of UK pig meat imports

	Fresh/frozen		Offal		Processed*
	(000 tonnes)	(£ million)	(000 tonnes)	(£ million)	(000 tonnes)
2017	467.0	943.9	18.1	17.8	512.6
2018	457.8	854.4	15.5	15.6	511.3
2019	447.9	951.1	17.1	18.4	451.6
2020	367.2	843.8	17.2	18.1	409.2
2021	321.1	661.4	15.3	17.8	395.5
2022	320.5	706.8	16.7	17.6	464.3
2023	331.5	965.1	16.4	22.3	433.8
2024	339.4	953.2	20.2	24.0	429.7

* Includes bacon, sausage, hams and canned pig meat.

Source: HM Revenue & Customs (HMRC)

Section 4 – Pigs

Table 4.7 Volume and value of UK pig meat exports

	Fresh/frozen		Offal		Processed*
	(000 tonnes)	(£ million)	(000 tonnes)	(£ million)	(000 tonnes)
2017	216.0	293.6	81.5	79.7	37.2
2018	217.8	291.8	88.4	79.1	40.3
2019	244.5	391.8	94.2	93.0	39.7
2020	258.4	420.3	106.0	121.5	33.3
2021	192.7	338.8	128.5	146.7	28.4
2022	189.4	333.4	145.6	184.7	37.7
2023	130.2	280.6	133.5	176.5	34.8
2024	122.2	243.5	142.7	162.2	33.2

* Includes bacon, sausage, hams and canned pig meat.

Source: HM Revenue & Customs (HMRC)

Table 4.8 UK pig meat imports

		2022	2023	2024
		(000 tonnes, product weight)		
Total pork		320.5	331.5	339.4
Of which from:	Denmark	83.9	87.0	86.3
	Germany	81.5	73.5	73.0
	Spain	50.2	46.1	44.4
	Belgium	23.6	36.5	43.5
	Irish Republic	13.4	18.8	28.5
	Netherlands	33.6	35.4	26.5
Bacon		200.8	180.3	176.5
Of which from:	Netherlands	111.7	103.0	103.8
	Denmark	57.2	54.6	49.9

Source: HM Revenue & Customs (HMRC)

Section 4 – Pigs

Table 4.9 UK pig meat exports

		2022	2023	2024
		(000 tonnes, product weight)		
Fresh/Frozen Pork		189.4	130.2	122.2
Of which to:	China	58.1	46.1	41.4
	Irish Republic	22.1	19.6	19.1
	Germany	19.9	18.0	18.9
	France	19.8	13.4	13.0
	United States	7.4	6.7	5.4
	Philippines	17.4	5.6	4.6
Bacon		16.9	13.4	10.2
Of which to:	Irish Republic	12.8	9.5	6.5
	France	2.6	2.1	1.9

Source: HM Revenue & Customs (HMRC)

Table 4.10 UK monthly pork trade, 2024

	UK pork imports	UK pork exports
	(000 tonnes, product weight)	
January	27.0	10.9
February	25.0	10.1
March	25.4	10.0
April	30.0	10.7
May	28.2	9.8
June	29.9	10.5
July	27.5	9.0
August	27.2	9.9
September	27.5	10.2
October	32.9	11.8
November	31.3	10.1
December	28.2	9.3

Source: HM Revenue & Customs (HMRC)

Section 4 – Pigs

Table 4.11 Deadweight pig prices in GB

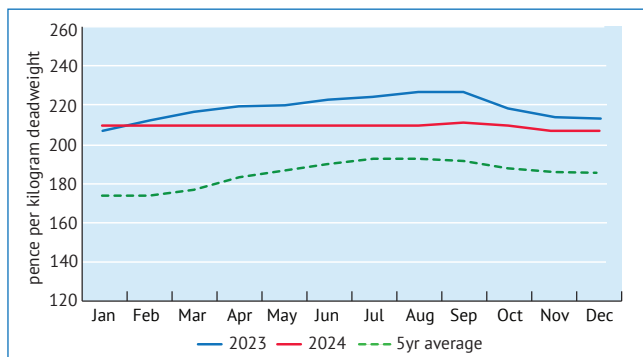
	SPP (EU Spec)	APP (EU Spec)
	(pence per kilogram deadweight)	
2022	177.5	182.8
2023	217.4	217.8
2024	209.6	211.1
2024 by month:		
January	211.9	212.0
February	211.3	211.2
March	211.5	211.9
April	210.9	211.9
May	211.2	212.1
June	210.3	212.6
July	209.6	211.4
August	209.8	211.8
September	209.1	212.0
October	207.5	209.6
November	206.4	208.8
December	206.2	208.3

EU specification excludes flare fat, kidney and diaphragm, the UK specification includes these parts.

Source: AHDB

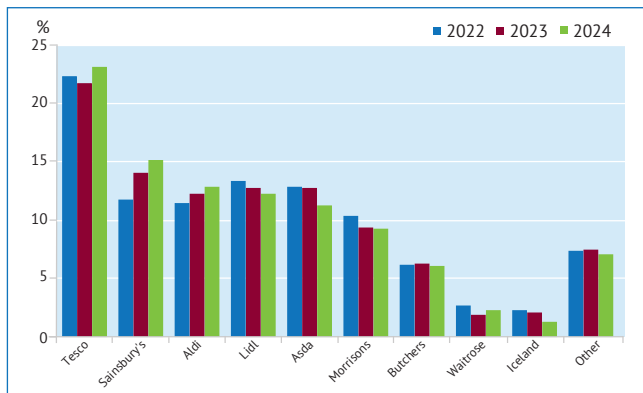
Section 4 – Pigs

Figure 4.2 Seasonality of deadweight pig APP EU-Spec prices, GB



EU specification excludes flare fat, kidney and diaphragm, the UK specification includes these parts.
Source: AHDB

Figure 4.3 Retailer volume shares of pork sales in GB, 2022-2024



Source: Worldpanel by Numerator UK

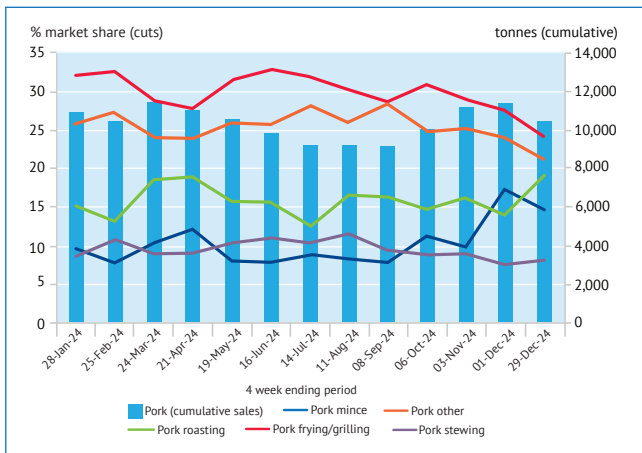
Section 4 – Pigs

Table 4.12 Changes in pork purchases, expenditure and average price in Wales and GB, 2024

	Pork purchases (tonnes)	Pork purchases (% change)	Pork expenditure (£ million)	Pork expenditure (% change)	Pork average price (£/kg)	Pork average price (% change)
Wales	6,451	-1.6	39.9	-2.3	6.18	-0.7
GB	134,858	-1.2	842.6	0.8	6.25	2.0

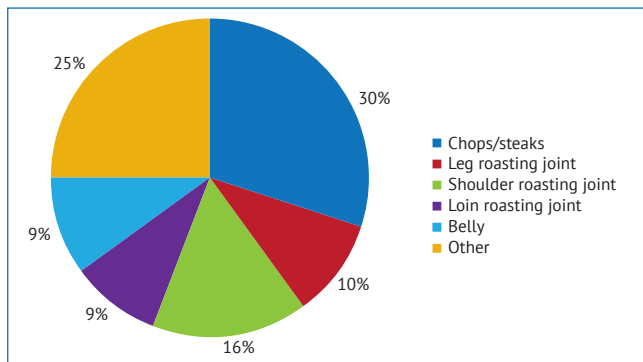
Source: Worldpanel by Numerator UK

Figure 4.4 Seasonality of pork sales at GB retail by cut, 2024



Source: Worldpanel by Numerator UK

Figure 4.5 Retail pork cuts sold in GB by volume, 2024



Source: Worldpanel by Numerator UK

Section 4 – Pigs

Table 4.13 Retail prices for selected pig meat cuts in Great Britain*

	Leg (boneless)	Loin steaks	Chops	Lean Mince
	(pence per kilogram)			
2024 by month:				
January	584.0	879.6	789.2	559.6
February	592.9	879.6	789.2	549.4
March	495.0	892.8	789.2	549.4
April	576.0	900.8	789.2	549.4
May	608.4	880.6	784.0	544.8
June	591.5	873.9	798.2	544.8
July	612.3	851.9	784.0	545.0
August	598.3	851.9	784.0	545.0
September	581.5	880.6	784.0	524.9
October	602.6	857.6	784.0	524.9
November	556.8	892.7	784.0	524.9
December	568.8	892.7	784.0	524.9

* Prices obtained from a weekly survey of a number of supermarkets' websites each week, with the prices quoted above for the last week of each month (or the latest week available).

Source: AHDB

Table 4.14 UK pork balance sheet*

	2022	2023	2024
	(000 tonnes)		
Production	1041.4	926.4	960.8
Imports	857.5	834.5	834.8
Exports	229.3	164.2	153.7
Total consumption	1,669.6	1,596.7	1,642.0
Self sufficiency **	62.4	58.0	58.5

* Total supplies of meat available for consumption. All weights are carcase weight equivalent.

** Self-sufficiency is based upon production as a percentage of consumption.

Source: AHDB, Defra, UK HMRC compiled by Trade Data Monitor LLC



Hybu Cig Cymru
Meat Promotion Wales



Hybu Cig Cymru-Meat Promotion Wales
Tŷ Rheidol
Parc Merlin,
Aberystwyth, Ceredigion SY23 3FF

Email: info@hybucig.cymru

© Hybu Cig Cymru 2025